



# YOUR GROUP ADVENTURE STARTS HERE



2026 SEASON

# WELCOME TO OUR 2026 SEASON!

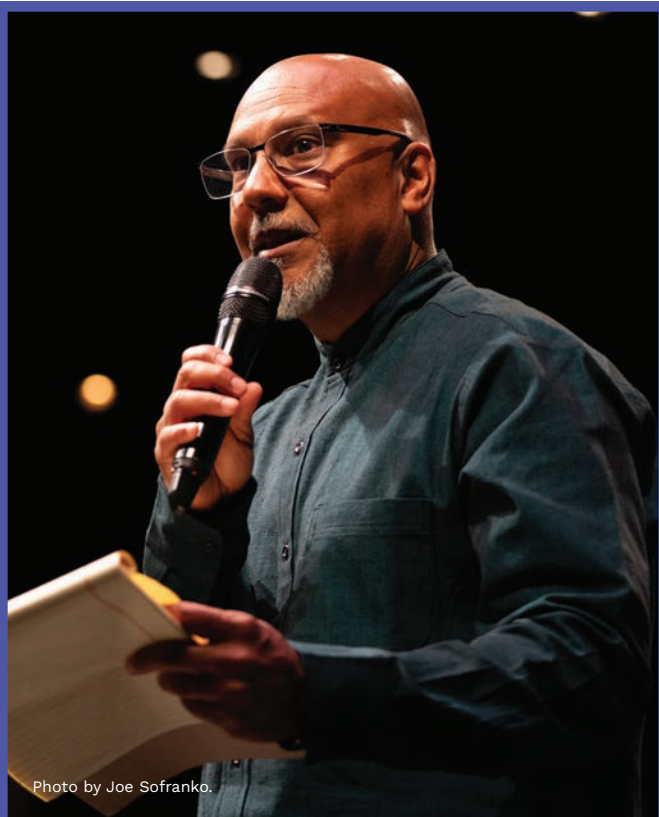


Photo by Joe Sofranko.

2026 is not just a season of plays. It's a season of possibility! At a time when the world can feel fractured, theatre reminds us of our shared humanity. To celebrate that spirit of community, we created this simple guide to help plan your group's trip. Keep reading to learn more, grab your group, and we'll meet you at the theatre.

*Tim Bond*

–Tim Bond, OSF Artistic Director



*Much Ado About Nothing* (2024): Ensemble.  
Photo by Joe Sofranko.



# A MIDSUMMER NIGHT'S DREAM



By **William Shakespeare**  
Directed by **Marcela Lorca**

**Angus Bowmer Theatre**  
**March 13 – October 25, 2026**

**“THE COURSE OF TRUE LOVE  
NEVER DID RUN SMOOTH”**

When Hermia, Lysander, Helena, and Demetrius flee into the woods, they do it in pursuit of personal freedom and their one true love. But making their way through the forest is particularly tricky under the influence of the mischievous Puck’s spells. The line between truth and illusion blurs as the couples are drawn into a dream world that is as dark and mysterious as it is marvelous and full of wonder, where magic reigns and nothing is quite as it seems. Shakespeare’s timeless romantic comedy returns to OSF with original music by Justin Huertas (*Lizard Boy*) in an enchanting production, under the direction of Marcela Lorca (*The Count of Monte Cristo*).

## SUITABILITY SUGGESTIONS

Shakespeare’s exquisite, perfectly balanced comedy is suitable for the entire family. There is some sexual innuendo that may be physicalized. This play can be an excellent way to introduce new viewers to Shakespeare. Preface recommended (see page 26).

# COME FROM AWAY



Book, Music, and Lyrics by  
**Irene Sankoff** and **David Hein**  
Directed by **Laurie Woolery**  
Choreographed by **Sunny Min-Sook Hitt**

**Angus Bowmer Theatre**  
**March 14 – October 24, 2026**

## THE DAY THE WORLD STOPPED

In the hours following September 11, 2001, as planes were grounded and uncertainty swept the globe, 7,000 stranded air travelers landed in the remote town of Gander, Newfoundland. With no time to prepare, the people of Gander opened their homes, their hearts, and their lives to these complete strangers. This Tony and Olivier Award-winning musical, based on that astonishing true story, unfolds through a propulsive, folk-inspired score and a cast of unforgettable real-life characters. A heart-forward, joyful celebration of resilience, *Come From Away* reminds audiences of all ages of the power of community in the darkest of times.

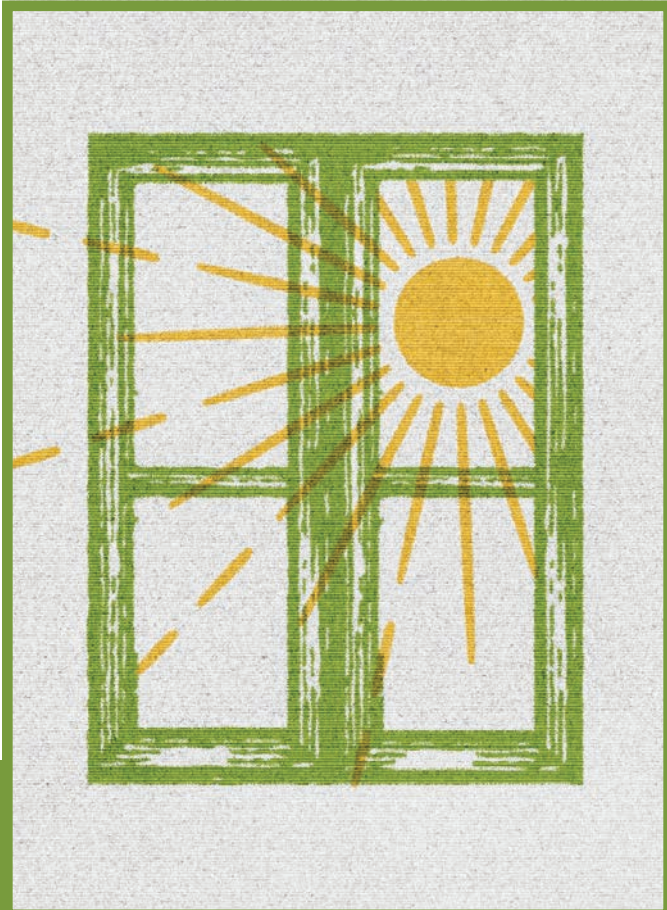
This production of *Come From Away* was licensed by Music Theatre International.

## SUITABILITY SUGGESTIONS

Student groups will want to see this Tony Award-nominated musical, which is a heartfelt snapshot of the aftermath of the 9/11 attacks. There are a few instances of profanity. Suitable for most audiences, this show portrays a community that rallies to help others in a dark and fearful time.



# A RAISIN IN THE SUN



By **Lorraine Hansberry**  
Directed by **Tim Bond**

**Angus Bowmer Theatre**  
**March 15 – July 19, 2026**

## “WHAT HAPPENS TO A DREAM DEFERRED?”

On the South Side of 1950s Chicago, the Younger family lives under one roof, bound together by love, struggle, and shelved dreams. When a life insurance check arrives after the death of their father, it sparks a chance to break free—from poverty, from their cramped apartment, and from the limits of a deeply segregated society. But each family member sees a different future, and the choices they make test everything they believe about identity, pride, and possibility. One of the greatest American dramas ever written, Lorraine Hansberry’s *A Raisin in the Sun* is fierce, tender, and as urgent now as when it first debuted in 1959. OSF Artistic Director Tim Bond brings to life a powerful revival of this seminal work *The New York Times* called “The play that changed American theatre forever.”

*A Raisin in the Sun* is presented by arrangement with Concord Theatricals on behalf of Samuel French, Inc. [www.concordtheatricals.com](http://www.concordtheatricals.com)

## SUITABILITY SUGGESTIONS

This is a truly great and deeply moving play, a classic of the American theatre and the first play written by a Black woman to be produced on Broadway. There is some mild profanity. One of the characters considers having an abortion, but it is only discussed euphemistically. The “n-word” is used once by a Black character to another. Suitable for most; student groups are strongly encouraged to make this play a part of their visit this season. Preface recommended (see page 26).

# YELLOW FACE

A SMART, SEMI-AUTOBIOGRAPHICAL  
COMEDY ABOUT THE MASKS  
WE WEAR



By **David Henry Hwang**  
Directed by **May Adrales**

**Angus Bowmer Theatre**  
**August 5 – October 23, 2026**

When DHH—a Chinese American playwright and staunch activist—protests the casting of a white actor in *Miss Saigon*, he never imagines he'll make the same mistake himself. But after accidentally casting a white actor in the lead Asian role of his own play, he scrambles to cover his tracks, spinning an increasingly ridiculous web of half-truths, media frenzy, and personal contradictions. Pulitzer Prize finalist *Yellow Face* is a laugh-out-loud mockumentary that skewers the worlds of theatre, identity politics, and public image with razor-sharp wit. Fresh off a thrilling Broadway run, David Henry Hwang's hilarious and thought-provoking Tony-nominated play comes to OSF in a new production directed by May Adrales (*Vietgone*).

## SUITABILITY SUGGESTIONS

This theatre industry-centered comedy is a satiric look at race and racism in the theatre. There is mild profanity, a euphemistic mention of pornography and sex toys, and comically racist language used by those stereotyped. This play is best suited for students who are prepared for the quick-moving dialogue related to people and events from 1988 to the present. Preface recommended (see page 26).



# YOU ARE CORDIALLY INVITED TO THE END OF THE WORLD!



By **Keiko Green**  
Directed by **Zi Alikhan**

**Thomas Theatre**  
**April 16 – August 21, 2026**

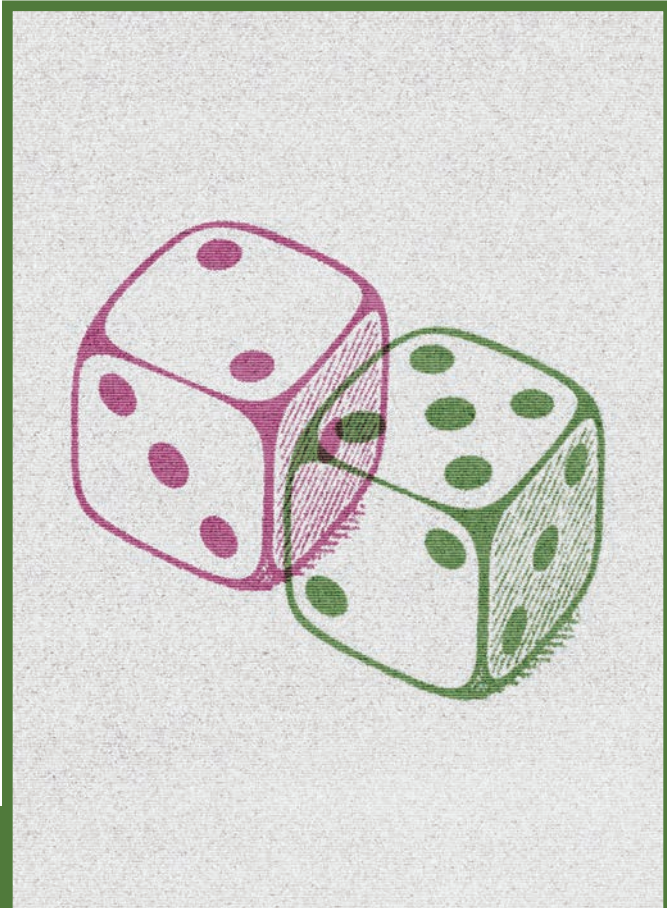
## A RAUCOUS COMEDY ABOUT THE UNTHINKABLE

Greg's been so good: he recycles, eats right, loves his wife, and has only a *slightly* uncomfortable relationship with his grown-up kid. But when he's faced with a terminal illness, he becomes obsessed with climate change and the fate of the planet while his wife and child try to cope with their own worlds ending. This play about grief—and cringe-y family dinners, and lawnmowers, and Greta Thunberg, and gay bars, and awkward support groups—is an exquisitely touching and hilarious story that anyone who's ever lost a loved one (or laughed at a funeral) can relate to.

## SUITABILITY SUGGESTIONS

This funny, sweet, life-affirming story is narrated by M, a non-binary aspiring performer who is processing their father's cancer diagnosis and the journey that follows. Containing some profanity, this dramedy is recommended for students who can handle the content.

# AUGUST WILSON'S KING HEDLEY II



By **August Wilson**  
Directed by **Tim Bond**

**Thomas Theatre**  
**July 16 – October 24, 2026**

**“I WANT EVERYBODY TO KNOW  
THAT KING HEDLEY II IS HERE...”**

It's 1985, and King returns to his family and community, determined to take control of his life after having served seven years in prison. He patches together odd jobs—some legal, some not, hoping to open a video store and build a new future. Two-time Pulitzer Prize-winning playwright August Wilson has created a mythic and metaphysical landscape full of unabashed lyricism amongst the crumbling Black neighborhood of Pittsburgh's Hill District. Like the hero of a Greek tragedy, King seeks redemption from a past that still haunts him: the murder that changed his life, old vendettas that won't die, and an explosive secret his mother has kept hidden. Director Tim Bond brings his love of August Wilson, along with a powerhouse cast, to this poetically tragic epic about systems of violence and intergenerational poverty, the ninth play in Wilson's American Century Cycle.

***King Hedley II* continues OSF's commitment to August Wilson's monumental American Century Cycle.**

August Wilson's *King Hedley II* is presented by arrangement with Concord Theatricals on behalf of Samuel French, Inc. [www.concordtheatricals.com](http://www.concordtheatricals.com)

## SUITABILITY SUGGESTIONS

Written by two-time Pulitzer Prize winner August Wilson, this play provides a gritty but poetic and language-driven look into Pittsburgh in the 1980s. Dialogue contains strong profanity, discussion of abortion, potentially blasphemous language, vivid descriptions of sexuality, and onstage violence. The “n-word” is used familiarly by Black characters to one another. Due to the mature content, this play is best suited to well-prepared students who can handle the material. Preface recommended (see page 26).



# SMOTE THIS, A COMEDY ABOUT GOD... AND OTHER SERIOUS \$H\*T



Created and performed by  
**Rodney Gardiner**  
Directed by **Raz Golden**

**Thomas Theatre**  
**August 27 – October 24, 2026**

## AN ENCORE OF THE HIT SOLO SHOW FROM RODNEY GARDINER

Back by popular demand, this sharp and hilarious solo show follows actor Rodney Gardiner as he attempts to abandon God—no easy feat for a devoutly raised, undocumented Black boy growing up in tumultuous 1980s Miami. For young Rodney, dealing with racial unrest, an immigration crisis, and the drug war is just another Tuesday. *Smote This* spins an entertaining web of personal stories and hilarious tangents that land with equal parts heart and heat. OSF is thrilled to welcome back Rodney, who has riveted our audiences for years in everything from musicals to Shakespeare.

### SUITABILITY SUGGESTIONS

This humorous, poignant piece about loss and growing up as a Caribbean Black immigrant contains profanity, sexual references, remembrances of being beaten as a child, and a comedic look at growing up in a very religious family. This play will be best suited for prepared students who are able to handle the content.

# THE TAMING OF THE SHREW

## ALL'S FAIR IN THE WAR OF LOVE



By **William Shakespeare**  
Directed by **Shana Cooper**

**Allen Elizabethan Theatre**  
**June 5 – October 11, 2026**

Sweet-natured Bianca has her choice of suitors, but there's a problem: she can't get married until her older sister, Kate, also gets hitched. And Kate—strong-willed, sharp-tongued—is not onboard with any of that. When a stranger, Petruchio, comes to town, he hatches a plan to win Kate, but it's not easy romancing an unbothered single woman who dishes out insults at lightning speed. Wordplay crackles and passions run high as the iconoclastic couple forges an unconventional path to love in this uproarious Shakespeare comedy. Directed by Shana Cooper (*The Unfortunates*, *Indecent*), this bold production turns the tables on tradition, inviting us to question everything we think we know about courtship, gender, and power.

### SUITABILITY SUGGESTIONS

Shakespeare's lively comedy has some sexual innuendo that is likely to be comically physicalized onstage. The play is best suited for audiences who are able to handle the sexuality inherent in Shakespeare's text. Preface recommended (see page 26).



# HENRY IV, PART ONE



By **William Shakespeare**  
Directed by **Rosa Joshi**

**Allen Elizabethan Theatre**  
**June 6 – October 10, 2026**

## A KINGDOM ON THE BRINK

King Henry IV is in trouble: a faction of his allies, including a valiant youngster named Hotspur, have turned on him and are now gunning for his throne. And his own son, Prince Hal, is no help, spending all his time languishing with his low-life drinking buddies and a corrupt knight, Falstaff, who holds a strange sway over the kid. Will Hal ever come around and act like the king he will be one day? Shakespeare's iconic history play is a stirring coming-of-age story, filled with humor, romance, and intrigue. Associate Artistic Director Rosa Joshi (*Henry V*, *Julius Caesar*) directs.

## SUITABILITY SUGGESTIONS

Shakespeare's funniest history play contains humorous bawdy language that may be physicalized, along with comic depictions of drinking, petty theft, and debauchery. It is suitable for well-prepared students able to handle these elements, the historical context, and the heightened language. Preface recommended (see page 26).

# EMMA



By **Kate Hamill**

Based on the novel by **Jane Austen**

Directed by **Meredith McDonough**

**Allen Elizabethan Theatre**  
**June 7 – October 9, 2026**

## GAME. SET. MATCHMAKE.

Jane Austen's beloved Regency-era heroine takes center stage in this fast, funny, feminist adaptation by Kate Hamill, featuring contemporary pop music and a screwball-comedy spirit. Emma believes she has it all figured out, especially when it comes to other people's love lives. The self-appointed matchmaker means well, but in a world with few options for women beyond marriage, her meddling leads to a bevy of misadventures, mishaps, and misunderstandings, leading her to confront the difference between toying with matters of the heart and truly experiencing them. Meredith McDonough makes her OSF directorial debut with a bold, genre-bending romp that turns Austen on her head.

*Emma* is presented through special arrangement with and all authorized performance materials are supplied by TRW PLAYS 1180 Avenue of the Americas, Suite 640, New York, NY 10036. [www.trwplays.com](http://www.trwplays.com)

## SUITABILITY SUGGESTIONS

This adaptation is an energetic jaunt through Jane Austen's classic comedy-romance featuring intelligent and feisty young women, the men who love them, and the men they come to love. The play includes a mention of drinking and mild profanity. Though it is a language-driven piece, the wit and pace of the production should make it accessible to students prepared for the content. Preface recommended (see page 26).



# DISCOVER THEATRE'S POWER TO TEACH AND CONNECT

## BEHIND THE CURTAIN TOUR

Explore OSF's campus and engage your creative imagination in one epic tour! This 1-hour event guides you through the offstage magic, highlighting the design and technical work that goes into our shows. With fresh displays and different tour routes every season, there's always something new to see and learn. Make it an even more memorable experience by bringing your students, classmates, friends, and family!

<b>Individual Ticket Buyer</b>	\$17
<b>Student Groups (per person)</b>	
15–29 students	\$15
30–59 students	\$12
60+ students	\$9
<b>Adult Groups (per person)</b>	\$15

## CAMPUS TOUR

Operated by the Tudor Guild, this 1-hour guided tour provides a unique opportunity to understand the collaborative nature of theatre and learn about the rich history of the Oregon Shakespeare Festival—from past to present. The tour involves walking (about ¾ of a mile) and stairs, but elevators are available at each stop to ensure accessibility. A great experience for visitors of all ages.

<b>Individual Ticket Buyer</b>	\$17
<b>Student Groups (per person)</b>	
15–29 students	\$15
30–59 students	\$12
60+ students	\$9
<b>Adult Groups (per person)</b>	\$15



Students on a tour.  
Photo by Joe Sofranko.

## WORKSHOPS

Investigate and process in our 90-minute workshops. Whether planned before or after one of our shows, your workshop leader will tailor material to suit your group's needs. Participants are welcomed into a dynamic environment where they are invited to engage with a show's language, themes, plot, and mood. Ask about our workshop topics. Learn and laugh as you explore topics ranging from design to management, acting to writing, and more.

### Group pricing (per person)

15–29 students	\$15
30–59 students	\$12
60+ students	\$9

Schedule	Tues	Wed	Thurs	Fri	Sat	Sun
9:30-11am	●	●	●	●	●	●
1-2:30pm	●	●	●	●	●	●
3-4:30pm	●	●	●	●	●	●

## STUDY GUIDES

Frame your experience at the Festival by prepping with a study guide! Crafted for each show in our season with production-specific information including play approach and playwright facts, discussion questions, research topics, related websites, and more. Study guides are great for learners of all ages.

2026 study guides are available for free at [OSFashland.org/education](https://OSFashland.org/education).

Study guides for all of Shakespeare's plays are also available on the OSF website.

# ACTIVITIES AND ADVENTURES FOR ALL GROUPS

## PREFACES

Take a peek inside each OSF production with a 30-minute Preface! These fun and interactive info sessions include a combination of insight into the play and playwright, historical context, and a glimpse into OSF's production approach.

### Preface pricing (per person)

<b>Individual Ticket Buyer</b>	\$15
<b>Student Groups</b>	\$7.50
<b>Adult Groups</b>	\$10



Actor and teaching artist Amy Lizardo leads a Preface. Photo by Stephen Kimbrell.

## GROUP DISCUSSIONS

Looking for a fun way to engage with an OSF theatre professional? Consider booking a group discussion! These 50-minute events engage participants in a conversation about plays they have seen or will see while at the Festival. Delve deeper into the work on our stages with a discussion leader who is part of our education, performance, or production teams. Because the format is conversational and interactive, we recommend these events after seeing one or more shows. Group Discussions cover different territory than our Prefaces, so consider doing both!

### Adult Group Discussion pricing (per person)

10-19 participants	\$15
20+ participants	\$12

### Student Group pricing (per person)

15-29 students	\$12
30-59 student	\$8.50
60+ students	\$7.50

Schedule	Tues	Wed	Thurs	Fri	Sat	Sun
9:30-10:30am	●	●	●	●	●	●
10:30-11:30am	●	●	●	●	●	●
1:30-2:30pm	●	●	●	●	●	●
3:30-4:30pm	●	●	●	●	●	●



Photo by Joe Sofranko





Actor Armando McClain in a Talkback.  
Photo by Joe Sofranko.

## CUSTOMIZED DISCUSSIONS

If you're looking for a unique way to extend and deepen your experience, work with our Education and Engagement team to curate a unique discussion. Bring your knitting group to hear more from one of our costume artisans. Connect your STEM students with one of our technical managers. Whether you're here as part of a class, work gathering, or something else entirely, consider adding a custom experience that connects your group's interest to the work on our stages. These discussions can be booked for one to two hours, and topics are completely customizable. For more information, please contact Group Sales at [groupsales@osfashland.org](mailto:groupsales@osfashland.org) or (866) 545-6337.

<b>Student Group pricing per person (minimum size of 15)</b> <i>(student groups may be combined)</i>	\$15
---	------

<b>Adult Group pricing per person (minimum size of 25)</b>	\$20
--	------

## PANEL DISCUSSIONS

Think your group would like to hear from a variety of perspectives? A panel discussion brings together a diverse range of artists, creatives, and/or administrators to speak with your group. From production to fundraising, there's so much happening at OSF! We'd love to connect you with the amazing humans who make this place so special. If there's an aspect of OSF's work you'd like to know more about, reach out to Group Sales to plan an event your group won't forget!

### Student Group pricing (per person)

<b>25-39</b>	\$15
<b>40-59</b>	\$12
<b>60+</b>	\$10
<b>Adult Groups</b>	\$17

*Price may vary depending on size of panel.*

## POST-SHOW TALKBACKS

Hungry for more after the curtain goes down? Attend a Post-Show Talkback! Most of these bite-sized events highlight the incredible work of artists and technicians in our company. Others feature scholars, specialists, and local folks who work in fields connected to issues in our plays. Talkbacks begin 10 to 15 minutes after the end of a performance and last approximately 25 minutes. Each is different and **free with your ticket to that performance!** Don't miss out on these delightful chances to deepen your connection to the art, people, and ideas on our stages. Available on Friday afternoons in the Angus Bowmer Theatre and Saturday afternoons in the Thomas Theatre. See the calendar (pages 32-47) for dates and shows.



Professor Harry Elam gives a talk on August Wilson. Photo by Stephen Kimbrell.

## SCHOOL VISIT PROGRAM

Bring a bit of OSF into your school! The School Visit Program is designed to bring the excitement of live theatre, Shakespeare, and learning to schools at an affordable price. Started over five decades ago, this program has reached tens of thousands of students and the north star has remained true: we believe experiencing live performance is vital and transformative. Our 40-minute performances are designed specifically for school audiences, bringing theatre to your gymnasium, theatre, cafeteria, or multi-purpose room. Invite your students to learn and play with our teams of two teaching artists as they present shows and teach workshops. Performances are fun, fast, and approachable, and our workshops are as comfortable in a Language Arts setting as they are in a Drama classroom. Developed with the common core in mind, our workshops are great tools to strengthen student confidence in reading comprehension and critical thinking.

Each year, OSF offers two School Visit programs for your students:

### A Shakespeare Performance

This performance is a 40-minute accessible adaptation of either a Shakespearean play or a thematically linked performance featuring scenes from Shakespeare's plays. This will be an excellent introduction to Shakespearean plays in performance.

### The Literature Program

The literature program utilizes poetry, classic prose, short stories by many contemporary authors, as well as classical writers like Shakespeare. This 40-minute presentation is a delightful introductory theatre experience, guaranteed to please all ages!

**Cost of a day visit:** \$1,500

Partial scholarships available.

For information about booking and other School Visit Program questions, please email the Education and Engagement team at [schoolvisit@osfashland.org](mailto:schoolvisit@osfashland.org), or visit [osfashland.org/SchoolVisitProgram](http://osfashland.org/SchoolVisitProgram).



Participants in an OSF class.  
Photo by Stephen Kimbrell.

## TEACHER CLASS

### Inside Shakespeare: *A Midsummer Night's Dream*

March 27–29

\$548; includes play tickets

Teacher training is back! Join our Education and Engagement team for a jam-packed three-day experience that combines active and engaged teacher training with the unparalleled work on our stages. Teachers will learn theatre-based teaching methods for Shakespeare's language, focused on *A Midsummer Night's Dream*. In addition to the embodied, kinesthetic teaching styles OSF is known for, participants will enjoy select shows playing during the class weekend. Rounding out the experience, OSF professionals spend time sharing their insights and processes. Partial scholarships available upon request.

Class prices include tickets to two shows and all Prefaces.



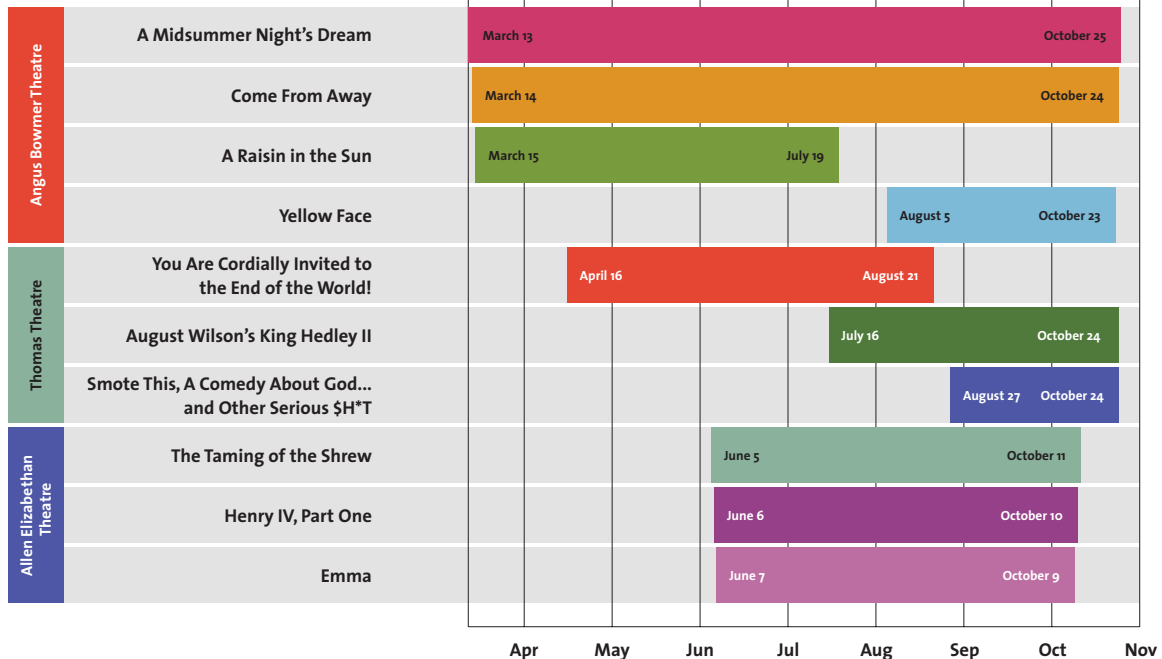
SUNDAY	MONDAY	TUESDAY	WEDNESDAY	THURSDAY	FRIDAY	SATURDAY
	<b>N</b> <b>O</b>				<b>MARCH 13</b> DREAM Ⓟ BMR 8:00	<b>14</b> COME AWAY Ⓟ BMR 8:00
<b>15</b> RAISIN Ⓟ BMR 8:00	<b>P</b> <b>L</b> <b>A</b> <b>Y</b> <b>S</b>	<b>17</b> Preface-Dream CARP 5:30 DREAM Ⓟ BMR 8:00	<b>18</b> Behind Curtain Tour 9:30 Preface-Come Away CARP 5:30 COME AWAY Ⓟ BMR 8:00	<b>19</b> Behind Curtain Tour 9:30 Preface-Raisin CARP 5:30 RAISIN Ⓟ BMR 8:00	<b>20</b> Behind Curtain Tour 9:30 Preface-Dream CARP 5:30 DREAM Ⓟ BMR 8:00	<b>21</b> Preface-Come Away CARP 5:30 COME AWAY Ⓟ BMR 8:00
<b>22</b> Preface-Raisin CARP 12:00 RAISIN Ⓟ BMR 1:30	<b>O</b> <b>N</b>	<b>24</b> Preface-Raisin CARP 5:30 RAISIN BMR 8:00	<b>25</b> Behind Curtain Tour 9:30 Preface-Come Away CARP 5:30 COME AWAY BMR 8:00	<b>26</b> Behind Curtain Tour 9:30 Preface-Dream CARP 5:30 DREAM BMR 8:00	<b>27</b> Behind Curtain Tour 9:30 Preface-Raisin CARP 5:30 RAISIN BMR 8:00	<b>28</b> Preface-Come Away CARP 12:00 COME AWAY BMR 1:30 Preface-Dream CARP 5:30 DREAM BMR 8:00
<b>29</b> RAISIN BMR 1:30	<b>M</b> <b>O</b> <b>N</b> <b>D</b> <b>A</b> <b>Y</b> <b>S</b>	<b>31</b> Preface-Dream NEW 5:30 DREAM BMR 8:00				

## Oregon Shakespeare Festival.

## 2026 SEASON AT A GLANCE

KEY	
Ⓟ	previews
Ⓞ	opens
BMR	Angus Bowmer Theatre
THO	Thomas Theatre
CARP	Carpenter Hall
NEW	New Place

- **Previews** are performances just before the play officially opens, an important part of the artistic process. We love preview audiences!
- **Preface:** See page 26.
- **Behind Curtain Tour:** See page 24
- **Talkback:** See page 29.



SUNDAY

MONDAY

TUESDAY

WEDNESDAY

THURSDAY

FRIDAY

SATURDAY

**5**  
COME AWAY **BMR** 1:30

**12**  
DREAM **BMR** 1:30

**19**  
RAISIN **BMR** 1:30

**26**  
COME AWAY **BMR** 1:30

N  
O  
P  
L  
A  
Y  
S  
  
O  
N  
M  
O  
N  
D  
A  
Y  
S

**7**  
RAISIN **BMR** 1:30  
Preface-Dream **CARP** 5:30  
DREAM **BMR** 8:00

**14**  
COME AWAY **BMR** 1:30  
Preface-Raisin **CARP** 5:30  
RAISIN **BMR** 8:00

**21**  
DREAM **BMR** 1:30  
Preface-Come Away **CARP** 5:30  
COME AWAY **BMR** 8:00

**28**  
RAISIN **BMR** 1:30  
Preface-Come Away **CARP** 5:30  
COME AWAY **BMR** 8:00

**APRIL 1**  
Behind Curtain Tour 9:30  
Preface-Raisin **NEW** 5:30  
RAISIN **BMR** 8:00

**8**  
Behind Curtain Tour 9:30  
Preface-Come Away **CARP** 12:00  
COME AWAY **BMR** 1:30  
Preface-Raisin **CARP** 5:30  
RAISIN **BMR** 8:00

**15**  
Behind Curtain Tour 9:30  
Preface-Dream **CARP** 12:00  
DREAM **BMR** 1:30  
Preface-Come Away **CARP** 5:30  
COME AWAY **BMR** 8:00

**22**  
Behind Curtain Tour 9:30  
Preface-Raisin **CARP** 12:00  
RAISIN **BMR** 1:30  
Preface-Dream **CARP** 5:30  
DREAM **BMR** 8:00

**29**  
Behind Curtain Tour 9:30  
Preface-Dream **CARP** 12:00  
DREAM **BMR** 1:30  
CORDIALLY **THO** 1:30  
Preface-Raisin **CARP** 5:30  
RAISIN **BMR** 8:00

**2**  
Behind Curtain Tour 9:30  
COME AWAY **BMR** 1:30  
Preface-Dream **NEW** 5:30  
DREAM **BMR** 8:00

**9**  
Behind Curtain Tour 9:30  
DREAM **BMR** 1:30  
Preface-Come Away **CARP** 5:30  
COME AWAY **BMR** 8:00

**16**  
Behind Curtain Tour 9:30  
RAISIN **BMR** 1:30  
CORDIALLY **THO** 1:30  
Preface-Dream **CARP** 5:30  
DREAM **BMR** 8:00

**23**  
Behind Curtain Tour 9:30  
COME AWAY **BMR** 1:30  
Preface-Raisin **CARP** 5:30  
RAISIN **BMR** 8:00  
CORDIALLY **THO** 8:00

**30**  
Behind Curtain Tour 9:30  
COME AWAY **BMR** 1:30  
Preface-Cordially **CARP** 5:30  
DREAM **BMR** 8:00  
CORDIALLY **THO** 8:00

**3**  
Behind Curtain Tour 9:30  
RAISIN **BMR** 1:30  
Talkback-after Raisin **BMR**  
Preface-Come Away **NEW** 5:30  
COME AWAY **BMR** 8:00

**10**  
Behind Curtain Tour 9:30  
RAISIN **BMR** 1:30  
Talkback-after Raisin **BMR**  
Preface-Dream **CARP** 5:30  
DREAM **BMR** 8:00

**17**  
Behind Curtain Tour 9:30  
COME AWAY **BMR** 1:30  
Talkback-after Come Away **BMR**  
Preface-Raisin **CARP** 5:30  
RAISIN **BMR** 8:00  
CORDIALLY **THO** 8:00

**24**  
Behind Curtain Tour 9:30  
Campus Tour 10:30  
DREAM **BMR** 1:30  
CORDIALLY **THO** 1:30  
Talkback-after Dream **BMR**  
Preface-Come Away **CARP** 5:30  
COME AWAY **BMR** 8:00

**4**  
Preface-Dream **NEW** 12:00  
DREAM **BMR** 1:30  
Preface-Raisin **NEW** 5:30  
RAISIN **BMR** 8:00

**11**  
Preface-Come Away **CARP** 12:00  
COME AWAY **BMR** 1:30  
Preface-Raisin **CARP** 5:30  
RAISIN **BMR** 8:00

**18**  
Preface-Cordially **CARP** 12:00  
DREAM **BMR** 1:30  
CORDIALLY **THO** 1:30  
Preface-Come Away **CARP** 5:30  
COME AWAY **BMR** 8:00

**25**  
Campus Tour 10:30  
Preface-Cordially **CARP** 12:00  
RAISIN **BMR** 1:30  
CORDIALLY **THO** 1:30  
Talkback-after Cordially **THO**  
Preface-Dream **CARP** 5:30  
DREAM **BMR** 8:00  
CORDIALLY **THO** 8:00

KEY

- P** previews
- O** opens
- BMR** Angus Bowmer Theatre
- THO** Thomas Theatre
- CARP** Carpenter Hall
- NEW** New Place

- **Previews** are performances just before the play officially opens, an important part of the artistic process. We love preview audiences!
- **Preface:** See page 26.
- **Campus Tour:** See page 24.
- **Behind Curtain Tour:** See page 24.
- **Talkback:** See page 29.

## WORKSHOPS

Educators, add to your student group's experience by booking a **Workshop**. From **interpreting text** to **exploring design** and beyond, each workshop is designed to engage students in kinesthetic, embodied learning. With so many dates and times to choose from, you're sure to find one that fits your schedule. See page 25 for details.



SUNDAY

MONDAY

TUESDAY

WEDNESDAY

THURSDAY

FRIDAY

SATURDAY

## MAY 1

Behind Curtain Tour 9:30  
Campus Tour 10:30  
**RAISIN BMR** 1:30  
**CORDIALLY THO** 1:30  
Talkback-after Raisin **BMR**  
Preface-Come Away **CARP** 5:30  
**COME AWAY BMR** 8:00

**2**  
Campus Tour 10:30  
Preface-Dream **CARP** 12:00  
**DREAM BMR** 1:30  
**CORDIALLY THO** 1:30  
Talkback-after Cordially **THO**  
Preface-Raisin **CARP** 5:30  
**RAISIN BMR** 8:00  
**CORDIALLY THO** 8:00

**3**  
**COME AWAY BMR** 1:30  
**DREAM BMR** 8:00

**N**

**O**

**P**

**5**  
**RAISIN BMR** 1:30  
Preface-Come Away **CARP** 5:30  
**COME AWAY BMR** 8:00

**6**  
Behind Curtain Tour 9:30  
Preface-Dream **CARP** 12:00  
**DREAM BMR** 1:30  
**CORDIALLY THO** 1:30  
Preface-Raisin **CARP** 5:30  
**RAISIN BMR** 8:00

**7**  
Behind Curtain Tour 9:30  
**COME AWAY BMR** 1:30  
Preface-Cordially **CARP** 5:30  
**DREAM BMR** 8:00  
**CORDIALLY THO** 8:00

**8**  
Behind Curtain Tour 9:30  
Campus Tour 10:30  
**RAISIN BMR** 1:30  
Talkback-after Raisin **BMR**  
Preface-Dream **CARP** 5:30  
**DREAM BMR** 8:00  
**CORDIALLY THO** 8:00

**9**  
Campus Tour 10:30  
Preface-Dream **CARP** 12:00  
**DREAM BMR** 1:30  
**CORDIALLY THO** 1:30  
Talkback-after Cordially **THO**  
Preface-Come Away **CARP** 5:30  
**COME AWAY BMR** 8:00

**10**  
**COME AWAY BMR** 1:30  
**RAISIN BMR** 8:00

**L**

**A**

**Y**

**S**

**12**  
**COME AWAY BMR** 1:30  
Preface-Dream **CARP** 5:30  
**DREAM BMR** 8:00

**13**  
Behind Curtain Tour 9:30  
Preface-Raisin **CARP** 12:00  
**RAISIN BMR** 1:30  
**CORDIALLY THO** 1:30  
Preface-Dream **CARP** 5:30  
**DREAM BMR** 8:00

**14**  
Behind Curtain Tour 9:30  
**DREAM BMR** 1:30  
**CORDIALLY THO** 1:30  
Preface-Come Away **CARP** 5:30  
**COME AWAY BMR** 8:00

**15**  
Behind Curtain Tour 9:30  
Campus Tour 10:30  
**RAISIN BMR** 1:30  
**CORDIALLY THO** 1:30  
Talkback-after Raisin **BMR**  
Preface-Come Away **CARP** 5:30  
**COME AWAY BMR** 8:00

**16**  
Campus Tour 10:30  
**COME AWAY BMR** 1:30  
Preface-Cordially **CARP** 5:30  
**RAISIN BMR** 8:00  
**CORDIALLY THO** 8:00

**17**  
**DREAM BMR** 1:30  
**CORDIALLY THO** 1:30  
**RAISIN BMR** 8:00

**O**

**N**

**M**

**19**  
**DREAM BMR** 1:30  
Preface-Cordially **NEW** 5:30  
**RAISIN BMR** 8:00  
**CORDIALLY THO** 8:00

**20**  
Behind Curtain Tour 9:30  
Preface-Come Away **NEW** 12:00  
**COME AWAY BMR** 1:30  
Preface-Raisin **NEW** 5:30  
**RAISIN BMR** 8:00

**21**  
Behind Curtain Tour 9:30  
**RAISIN BMR** 1:30  
Preface-Dream **CARP** 5:30  
**DREAM BMR** 8:00  
**CORDIALLY THO** 8:00

**22**  
Behind Curtain Tour 9:30  
Campus Tour 10:30  
**COME AWAY BMR** 1:30  
Talkback-after Come Away **BMR**  
Preface-Dream **CARP** 5:30  
**DREAM BMR** 8:00  
**CORDIALLY THO** 8:00

**23**  
Campus Tour 10:30  
Preface-Cordially **CARP** 12:00  
**DREAM BMR** 1:30  
**CORDIALLY THO** 1:30  
Talkback-after Cordially **THO**  
Preface-Come Away **CARP** 5:30  
**COME AWAY BMR** 8:00

**24**  
**RAISIN BMR** 1:30  
**CORDIALLY THO** 1:30  
**COME AWAY BMR** 8:00

**O**

**N**

**D**

**A**

**Y**

**26**  
**RAISIN BMR** 1:30  
Preface-Cordially **CARP** 5:30  
**DREAM BMR** 8:00  
**CORDIALLY THO** 8:00

**27**  
Behind Curtain Tour 9:30  
Preface-Dream **CARP** 12:00  
**DREAM BMR** 1:30  
**CORDIALLY THO** 1:30  
Preface-Come Away **CARP** 5:30  
**COME AWAY BMR** 8:00

**28**  
Behind Curtain Tour 9:30  
**COME AWAY BMR** 1:30  
Preface-Raisin **CARP** 5:30  
**RAISIN BMR** 8:00

**29**  
Behind Curtain Tour 9:30  
Campus Tour 10:30  
**RAISIN BMR** 1:30  
**CORDIALLY THO** 1:30  
Talkback-after Raisin **BMR**  
Preface-Dream **CARP** 5:30  
**DREAM BMR** 8:00  
**CORDIALLY THO** 8:00

**30**  
Campus Tour 10:30  
Preface-Cordially **CARP** 12:00  
**DREAM BMR** 1:30  
**CORDIALLY THO** 1:30  
Talkback-after Cordially **THO**  
Preface-Come Away **CARP** 5:30  
**COME AWAY BMR** 8:00

**31**  
**COME AWAY BMR** 1:30  
**RAISIN BMR** 8:00

**S**

### KEY

<b>BMR</b>	Angus Bowmer Theatre
<b>THO</b>	Thomas Theatre
<b>ALLEN</b>	Allen Elizabethan Theatre
<b>CARP</b>	Carpenter Hall
<b>NEW</b>	New Place

- Preface: See page 26.
- Campus Tour: See page 24.
- Behind Curtain Tour: See page 24.
- Talkback: See page 29.



Photo by Joe Sofranko.

## ENJOY ALL OF YOUR INTERMISSION

Your group can take advantage of our **pre-order concession services** in all of our theatres. **Place your order before the show** and have your beverages, sweets, and savories **waiting for you at intermission.**

SUNDAY

MONDAY

TUESDAY

WEDNESDAY

THURSDAY

FRIDAY

SATURDAY

N  
O

## JUNE 2

**COME AWAY** **BMR** 1:30  
Preface-Dream **CARP** 5:30  
**DREAM** **BMR** 8:00  
**CORDIALLY** **THO** 8:00

**3**  
Behind Curtain Tour 9:30  
Preface-Raisin **CARP** 12:00  
**RAISIN** **BMR** 1:30  
**CORDIALLY** **THO** 1:30  
Preface-Come Away **CARP** 5:30  
**COME AWAY** **BMR** 8:00

**4**  
Behind Curtain Tour 9:30  
**DREAM** **BMR** 1:30  
Preface-Raisin **CARP** 5:30  
**RAISIN** **BMR** 8:00

**5**  
Behind Curtain Tour 9:30  
Campus Tour 10:30  
**COME AWAY** **BMR** 1:30  
Talkback-after Come Away **BMR**  
Preface-Shrew **CARP** 5:30  
**DREAM** **BMR** 8:00  
**CORDIALLY** **THO** 8:00  
**SHREW** **ALLEN** 8:00

**6**  
Campus Tour 10:30  
Preface-Cordially **CARP** 12:00  
**RAISIN** **BMR** 1:30  
**CORDIALLY** **THO** 1:30  
Talkback-after Cordially **THO**  
Preface-Henry **CARP** 5:30  
**COME AWAY** **BMR** 8:00  
**HENRY IV: 1** **ALLEN** 8:00

**7**

**DREAM** **BMR** 1:30  
**CORDIALLY** **THO** 1:30  
**RAISIN** **BMR** 8:00  
**EMMA** **ALLEN** 8:00

P  
L  
A  
Y  
S

**9**

**RAISIN** **BMR** 1:30  
Preface-Dream **CARP** 5:30  
**DREAM** **BMR** 8:00  
**CORDIALLY** **THO** 8:00

**10**  
Behind Curtain Tour 9:30  
Preface-Cordially **CARP** 12:00  
**DREAM** **BMR** 1:30  
**CORDIALLY** **THO** 1:30  
Preface-Come Away **CARP** 5:30  
**COME AWAY** **BMR** 8:00

**11**

Behind Curtain Tour 9:30  
**COME AWAY** **BMR** 1:30  
Preface-Raisin **CARP** 5:30  
**RAISIN** **BMR** 8:00  
**CORDIALLY** **THO** 8:00

**12**  
Behind Curtain Tour 9:30  
Campus Tour 10:30  
**RAISIN** **BMR** 1:30  
**CORDIALLY** **THO** 1:30  
Talkback-after Raisin **BMR**  
Preface-Shrew **CARP** 5:30  
Green Show **GSS** 6:30  
**DREAM** **BMR** 8:00  
**SHREW** **ALLEN** 8:00

**13**

Campus Tour 10:30  
Preface-Dream **CARP** 12:00  
**DREAM** **BMR** 1:30  
**CORDIALLY** **THO** 1:30  
Talkback-after Cordially **THO**  
Preface-Henry **CARP** 5:30  
Green Show **GSS** 6:30  
**COME AWAY** **BMR** 8:00  
**HENRY IV: 1** **ALLEN** 8:00

**14**

**COME AWAY** **BMR** 1:30  
**RAISIN** **BMR** 8:00  
**EMMA** **ALLEN** 8:00

O  
N

**16**

**RAISIN** **BMR** 1:30  
**CORDIALLY** **THO** 1:30  
Preface-Dream **NEW** 5:30  
Green Show **GSS** 6:30  
**DREAM** **BMR** 8:00

**17**

Behind Curtain Tour 9:30  
Preface-Cordially **NEW** 12:00  
**DREAM** **BMR** 1:30  
**CORDIALLY** **THO** 1:30  
Preface-Come Away **NEW** 5:30  
Green Show **GSS** 6:30  
**COME AWAY** **BMR** 8:00

**18**

Behind Curtain Tour 9:30  
**COME AWAY** **BMR** 1:30  
Preface-Raisin **CARP** 5:30  
Green Show **GSS** 6:30  
**RAISIN** **BMR** 8:00  
**CORDIALLY** **THO** 8:00

**19**

Behind Curtain Tour 9:30  
Campus Tour 10:30  
**RAISIN** **BMR** 1:30  
**CORDIALLY** **THO** 1:30  
Talkback-after Raisin **BMR**  
Preface-Shrew **CARP** 5:30  
Green Show **GSS** 6:30  
**DREAM** **BMR** 8:00  
**SHREW** **ALLEN** 8:00

**20**

Campus Tour 10:30  
Preface-Dream **NEW** 12:00  
**DREAM** **BMR** 1:30  
**CORDIALLY** **THO** 1:30  
Talkback-after Cordially **THO**  
Preface-Henry **NEW** 5:30  
Green Show **GSS** 6:30  
**COME AWAY** **BMR** 8:00  
**HENRY IV: 1** **ALLEN** 8:00

**21**

**COME AWAY** **BMR** 1:30  
Preface-Emma **NEW** 5:30  
**RAISIN** **BMR** 8:00  
**EMMA** **ALLEN** 8:00

M  
O  
N  
D  
A  
Y  
S

**23**

Preface-Emma **CARP** 5:30  
Green Show **GSS** 6:30  
**RAISIN** **BMR** 8:00  
**CORDIALLY** **THO** 8:00  
**EMMA** **ALLEN** 8:00

**24**

Behind Curtain Tour 9:30  
Preface-Cordially **CARP** 12:00  
**RAISIN** **BMR** 1:30  
**CORDIALLY** **THO** 1:30  
Preface-Dream **CARP** 5:30  
Green Show **GSS** 6:30  
**DREAM** **BMR** 8:00  
**SHREW** **ALLEN** 8:00

**25**

Behind Curtain Tour 9:30  
Preface-Henry **CARP** 5:30  
Green Show **GSS** 6:30  
**COME AWAY** **BMR** 8:00  
**HENRY IV: 1** **ALLEN** 8:00

**26**

Behind Curtain Tour 9:30  
Campus Tour 10:30  
**COME AWAY** **BMR** 1:30  
Talkback-after Come Away **BMR**  
Preface-Raisin **CARP** 5:30  
Green Show **GSS** 6:30  
**RAISIN** **BMR** 8:00  
**CORDIALLY** **THO** 8:00  
**EMMA** **ALLEN** 8:00

**27**

Campus Tour 10:30  
Preface-Cordially **CARP** 12:00  
**RAISIN** **BMR** 1:30  
**CORDIALLY** **THO** 1:30  
Talkback-after Cordially **THO**  
Preface-Shrew **CARP** 5:30  
Green Show **GSS** 6:30  
**DREAM** **BMR** 8:00  
**SHREW** **ALLEN** 8:00

**28**

**DREAM** **BMR** 1:30  
**COME AWAY** **BMR** 8:00  
**HENRY IV: 1** **ALLEN** 8:00

**30**

**RAISIN** **BMR** 1:30  
**CORDIALLY** **THO** 1:30  
Preface-Come Away **CARP** 5:30  
Green Show **GSS** 6:30  
**COME AWAY** **BMR** 8:00  
**HENRY IV: 1** **ALLEN** 8:00

### KEY

<b>P</b>	previews
<b>O</b>	opens
<b>BMR</b>	Angus Bowmer Theatre
<b>THO</b>	Thomas Theatre
<b>ALLEN</b>	Allen Elizabethan Theatre
<b>GSS</b>	Green Show Stage
<b>CARP</b>	Carpenter Hall
<b>NEW</b>	New Place

- **Previews** are performances just before the play officially opens, an important part of the artistic process. We love preview audiences!
- **Preface:** See page 26.
- **Campus Tour:** See page 24.
- **Behind Curtain Tour:** See page 24.
- **Talkback:** See page 29.
- **Green Show:** Concerts on the Bricks. Free.



Photo by Jenny Graham.

## BRASS RUBBING

**Channel your inner artisan** with the age-old process of Brass Rubbing, a medieval craft that even Shakespeare would love! This **hands-on experience** offers a fun and unique glimpse into the past and a **beautiful piece of artwork to take home**. In the summer months, Wednesday-Saturday, 10am-1pm, Bill Patton Garden (behind the Allen Elizabeth Theatre.)



SUNDAY

MONDAY

TUESDAY

WEDNESDAY

THURSDAY

FRIDAY

SATURDAY

## JULY 1

Behind Curtain Tour 9:30  
 Preface-Dream **CARP** 12:00  
**DREAM BMR** 1:30  
 Preface-Emma **CARP** 5:30  
 Green Show **GSS** 6:30  
**RAISIN BMR** 8:00  
**EMMA ALLEN** 8:00

2

Behind Curtain Tour 9:30  
**COME AWAY BMR** 1:30  
 Preface-Shrew **CARP** 5:30  
 Green Show **GSS** 6:30  
**DREAM BMR** 8:00  
**CORDIALLY THO** 8:00  
**SHREW ALLEN** 8:00

3

Behind Curtain Tour 9:30  
 Campus Tour 10:30  
**RAISIN BMR** 1:30  
**CORDIALLY THO** 1:30  
 Talkback-after *Raisin* **BMR**  
 Preface-Henry **CARP** 5:30  
 Green Show **GSS** 6:30  
**COME AWAY BMR** 8:00  
**HENRY IV:1 ALLEN** 8:00

4

**DREAM BMR** 1:30  
**CORDIALLY THO** 1:30  
 Green Show **GSS** 6:30  
**RAISIN BMR** 8:00  
**EMMA ALLEN** 8:00

5

**COME AWAY BMR** 1:30  
**DREAM BMR** 8:00  
**SHREW ALLEN** 8:00

N  
O  
P  
L  
A  
Y  
S

7

**RAISIN BMR** 1:30  
 Preface-Dream **CARP** 5:30  
 Green Show **GSS** 6:30  
**DREAM BMR** 8:00  
**SHREW ALLEN** 8:00

8

Behind Curtain Tour 9:30  
 Preface-Come Away **CARP** 12:00  
**COME AWAY BMR** 1:30  
 Preface-Emma **CARP** 5:30  
 Green Show **GSS** 6:30  
**RAISIN BMR** 8:00  
**EMMA ALLEN** 8:00

9

Behind Curtain Tour 9:30  
**DREAM BMR** 1:30  
 Preface-Henry **CARP** 5:30  
 Green Show **GSS** 6:30  
**COME AWAY BMR** 8:00  
**HENRY IV:1 ALLEN** 8:00

10

Behind Curtain Tour 9:30  
 Campus Tour 10:30  
**RAISIN BMR** 1:30  
 Talkback-after *Raisin* **BMR**  
 Preface-Shrew **CARP** 5:30  
 Green Show **GSS** 6:30  
**DREAM BMR** 8:00  
**SHREW ALLEN** 8:00

11

Campus Tour 10:30  
 Preface-Come Away **CARP** 12:00  
**COME AWAY BMR** 1:30  
 Preface-Raisin **CARP** 5:30  
 Green Show **GSS** 6:30  
**RAISIN BMR** 8:00  
**CORDIALLY THO** 8:00  
**EMMA ALLEN** 8:00

12

**DREAM BMR** 1:30  
**CORDIALLY THO** 1:30  
**COME AWAY BMR** 8:00  
**HENRY IV:1 ALLEN** 8:00

O  
N

14

**DREAM BMR** 1:30  
 Preface-Raisin **CARP** 5:30  
 Green Show **GSS** 6:30  
**RAISIN BMR** 8:00  
**CORDIALLY THO** 8:00  
**EMMA ALLEN** 8:00

15

Behind Curtain Tour 9:30  
 Preface-Cordially **CARP** 12:00  
**RAISIN BMR** 1:30  
**CORDIALLY THO** 1:30  
 Preface-Henry **CARP** 5:30  
 Green Show **GSS** 6:30  
**COME AWAY BMR** 8:00  
**HENRY IV:1 ALLEN** 8:00

16

Behind Curtain Tour 9:30  
**COME AWAY BMR** 1:30  
**HEDLEY THO** 1:30  
 Preface-Shrew **CARP** 5:30  
 Green Show **GSS** 6:30  
**DREAM BMR** 8:00  
**SHREW ALLEN** 8:00

17

Behind Curtain Tour 9:30  
 Campus Tour 10:30  
**COME AWAY BMR** 1:30  
**HEDLEY THO** 1:30  
 Talkback-after *Come Away* **BMR**  
 Preface-Emma **CARP** 5:30  
 Green Show **GSS** 6:30  
**RAISIN BMR** 8:00  
**CORDIALLY THO** 8:00  
**EMMA ALLEN** 8:00

18

Campus Tour 10:30  
 Preface-Dream **CARP** 12:00  
**DREAM BMR** 1:30  
**CORDIALLY THO** 1:30  
 Talkback-after *Cordially* **THO**  
 Preface-Hedley **CARP** 5:30  
 Green Show **GSS** 6:30  
**COME AWAY BMR** 8:00  
**HEDLEY THO** 8:00  
**HENRY IV:1 ALLEN** 8:00

19

**RAISIN THO** 1:30  
**DREAM BMR** 8:00  
**SHREW ALLEN** 8:00

M  
O  
N  
D  
A  
Y  
S

21

Preface-Henry **CARP** 5:30  
 Green Show **GSS** 6:30  
**HENRY IV:1 ALLEN** 8:00

22

Behind Curtain Tour 9:30  
 Preface-Come Away **CARP** 12:00  
**COME AWAY BMR** 1:30  
 Preface-Shrew **CARP** 5:30  
 Green Show **GSS** 6:30  
**DREAM BMR** 8:00  
**SHREW ALLEN** 8:00

23

Behind Curtain Tour 9:30  
**COME AWAY BMR** 1:30  
**HEDLEY THO** 1:30  
 Preface-Emma **CARP** 5:30  
 Green Show **GSS** 6:30  
**CORDIALLY THO** 8:00  
**EMMA ALLEN** 8:00

24

Behind Curtain Tour 9:30  
 Campus Tour 10:30  
**DREAM BMR** 1:30  
**CORDIALLY THO** 1:30  
 Talkback-after *Dream* **BMR**  
 Preface-Henry **CARP** 5:30  
 Green Show **GSS** 6:30  
**COME AWAY BMR** 8:00  
**HEDLEY THO** 8:00  
**HENRY IV:1 ALLEN** 8:00

25

Campus Tour 10:30  
 Preface-Cordially **CARP** 12:00  
**CORDIALLY THO** 1:30  
 Talkback-after *Cordially* **THO**  
 Preface-Hedley **CARP** 5:30  
 Green Show **GSS** 6:30  
**HEDLEY THO** 8:00  
**SHREW ALLEN** 8:00

26

**HEDLEY THO** 1:30  
**EMMA ALLEN** 8:00

28

**CORDIALLY THO** 1:30  
 Preface-Shrew **CARP** 5:30  
 Green Show **GSS** 6:30  
**SHREW ALLEN** 8:00

29

Behind Curtain Tour 9:30  
 Preface-Hedley **CARP** 12:00  
**HEDLEY THO** 1:30  
 Preface-Henry **CARP** 5:30  
 Green Show **GSS** 6:30  
**HEDLEY THO** 8:00  
**HENRY IV:1 ALLEN** 8:00

30

Behind Curtain Tour 9:30  
**CORDIALLY THO** 1:30  
 Preface-Emma **CARP** 5:30  
 Green Show **GSS** 6:30  
**EMMA ALLEN** 8:00

31

Behind Curtain Tour 9:30  
 Campus Tour 10:30  
**HEDLEY THO** 1:30  
 Preface-Dream **CARP** 5:30  
 Green Show **GSS** 6:30  
**DREAM BMR** 8:00  
**CORDIALLY THO** 8:00  
**SHREW ALLEN** 8:00

### KEY

- P** previews
- O** opens
- C** closes
- BMR** Angus Bowmer Theatre
- THO** Thomas Theatre
- ALLEN** Allen Elizabethan Theatre
- GSS** Green Show Stage
- CARP** Carpenter Hall

- **Previews** are performances just before the play officially opens, an important part of the artistic process. We love preview audiences!
- **Preface:** See page 26.

- **Campus Tour:** See page 24.
- **Behind Curtain Tour:** See page 24.
- **Talkback:** See page 29.
- **Green Show:** Concerts on the Bricks. Free.

## GREEN SHOW

Our popular **free evening concert series** returns to the Courtyard Stage in 2026! Visit [osfashland.org/greenshow](http://osfashland.org/greenshow) in late spring 2026 for the lineup. Concerts run **June 12 – September 26, Tuesday through Saturday, 6:30pm.**

## AUGUST 1

Campus Tour 10:30  
 Preface-Cordially **CARP** 12:00  
**DREAM BMR** 1:30  
**CORDIALLY THO** 1:30  
 Talkback-after *Cordially* **THO**  
 Preface-Henry **CARP** 5:30  
 Green Show **GSS** 6:30  
**COME AWAY BMR** 8:00  
**HEDLEY THO** 8:00  
**HENRY IV:1 ALLEN** 8:00

**2**  
**HEDLEY THO** 1:30  
**EMMA ALLEN** 8:00

N  
O  
P

**4**  
**HEDLEY THO** 1:30  
 Preface-Emma **CARP** 5:30  
 Green Show **GSS** 6:30  
**EMMA ALLEN** 8:00

**5**  
 Behind Curtain Tour 9:30  
 Preface-Cordially **CARP** 12:00  
**CORDIALLY THO** 1:30  
 Preface-Shrew **CARP** 5:30  
 Green Show **GSS** 6:30  
**YELLOW** **BMR** 8:00  
**CORDIALLY THO** 8:00  
**SHREW ALLEN** 8:00

**6**  
 Behind Curtain Tour 9:30  
**HEDLEY THO** 1:30  
 Preface-Henry **CARP** 5:30  
 Green Show **GSS** 6:30  
**COME AWAY BMR** 8:00  
**HEDLEY THO** 8:00  
**HENRY IV:1 ALLEN** 8:00

**7**  
 Behind Curtain Tour 9:30  
 Campus Tour 10:30  
**DREAM BMR** 1:30  
 Talkback-after *Dream* **BMR**  
 Preface-Emma **CARP** 5:30  
 Green Show **GSS** 6:30  
**YELLOW** **BMR** 8:00  
**CORDIALLY THO** 8:00  
**EMMA ALLEN** 8:00

**8**  
 Campus Tour 10:30  
 Preface-Hedley **CARP** 12:00  
**HEDLEY THO** 1:30  
 Talkback-after *Hedley* **THO**  
 Preface-Dream **CARP** 5:30  
 Green Show **GSS** 6:30  
**DREAM BMR** 8:00  
**CORDIALLY THO** 8:00  
**SHREW ALLEN** 8:00

**9**  
 Preface-Yellow **CARP** 12:00  
**YELLOW** **BMR** 1:30  
**HEDLEY THO** 1:30  
**COME AWAY BMR** 8:00  
**HENRY IV:1 ALLEN** 8:00

L  
A  
Y  
S

**11**  
**DREAM BMR** 1:30  
 Preface-Henry **NEW** 5:30  
 Green Show **GSS** 6:30  
**COME AWAY BMR** 8:00  
**HENRY IV:1 ALLEN** 8:00

**12**  
 Behind Curtain Tour 9:30  
 Preface-Hedley **NEW** 12:00  
**HEDLEY THO** 1:30  
 Preface-Yellow **NEW** 5:30  
 Green Show **GSS** 6:30  
**YELLOW BMR** 8:00  
**CORDIALLY THO** 8:00  
**EMMA ALLEN** 8:00

**13**  
 Behind Curtain Tour 9:30  
**COME AWAY BMR** 1:30  
**HEDLEY THO** 1:30  
 Preface-Shrew **CARP** 5:30  
 Green Show **GSS** 6:30  
**DREAM BMR** 8:00  
**SHREW ALLEN** 8:00

**14**  
 Behind Curtain Tour 9:30  
 Campus Tour 10:30  
**YELLOW BMR** 1:30  
**CORDIALLY THO** 1:30  
 Talkback-after *Yellow* **BMR**  
 Preface-Henry **CARP** 5:30  
 Green Show **GSS** 6:30  
**COME AWAY BMR** 8:00  
**HEDLEY THO** 8:00  
**HENRY IV:1 ALLEN** 8:00

**15**  
 Campus Tour 10:30  
 Preface-Dream **CARP** 12:00  
**DREAM BMR** 1:30  
**CORDIALLY THO** 1:30  
 Talkback-after *Cordially* **THO**  
 Preface-Emma **CARP** 5:30  
 Green Show **GSS** 6:30  
**YELLOW BMR** 8:00  
**CORDIALLY THO** 8:00  
**EMMA ALLEN** 8:00

**16**  
**COME AWAY BMR** 1:30  
**HEDLEY THO** 1:30  
**DREAM BMR** 8:00  
**SHREW ALLEN** 8:00

O  
N  
M

**18**  
**YELLOW BMR** 1:30  
**CORDIALLY THO** 1:30  
 Preface-Dream **CARP** 5:30  
 Green Show **GSS** 6:30  
**DREAM BMR** 8:00  
**SHREW ALLEN** 8:00

**19**  
 Behind Curtain Tour 9:30  
 Preface-Come Away **CARP** 12:00  
**COME AWAY BMR** 1:30  
**HEDLEY THO** 1:30  
 Preface-Yellow **CARP** 5:30  
 Green Show **GSS** 6:30  
**YELLOW BMR** 8:00  
**EMMA ALLEN** 8:00

**20**  
 Behind Curtain Tour 9:30  
**DREAM BMR** 1:30  
**CORDIALLY THO** 1:30  
 Preface-Henry **CARP** 5:30  
 Green Show **GSS** 6:30  
**COME AWAY BMR** 8:00  
**HENRY IV:1 ALLEN** 8:00

**21**  
 Behind Curtain Tour 9:30  
 Campus Tour 10:30  
**YELLOW BMR** 1:30  
**HEDLEY THO** 1:30  
 Talkback-after *Yellow* **BMR**  
 Preface-Shrew **CARP** 5:30  
 Green Show **GSS** 6:30  
**DREAM BMR** 8:00  
**CORDIALLY THO** 8:00  
**SHREW ALLEN** 8:00

**22**  
 Campus Tour 10:30  
 Preface-Hedley **CARP** 12:00  
**COME AWAY BMR** 1:30  
**HEDLEY THO** 1:30  
 Talkback-after *Hedley* **THO**  
 Preface-Emma **CARP** 5:30  
 Green Show **GSS** 6:30  
**YELLOW BMR** 8:00  
**EMMA ALLEN** 8:00

**23**  
**DREAM BMR** 1:30  
**COME AWAY BMR** 8:00  
**HENRY IV:1 ALLEN** 8:00

O  
N  
D  
A  
Y  
S

**25**  
**COME AWAY BMR** 1:30  
 Preface-Yellow **CARP** 5:30  
 Green Show **GSS** 6:30  
**YELLOW BMR** 8:00  
**EMMA ALLEN** 8:00

**26**  
 Behind Curtain Tour 9:30  
 Preface-Dream **CARP** 12:00  
**DREAM BMR** 1:30  
 Preface-Henry **CARP** 5:30  
 Green Show **GSS** 6:30  
**COME AWAY BMR** 8:00  
**HEDLEY THO** 8:00  
**HENRY IV:1 ALLEN** 8:00

**27**  
 Behind Curtain Tour 9:30  
**YELLOW BMR** 1:30  
 Preface-Shrew **CARP** 5:30  
 Green Show **GSS** 6:30  
**DREAM BMR** 8:00  
**SMOTE THIS THO** 8:00  
**SHREW ALLEN** 8:00

**28**  
 Behind Curtain Tour 9:30  
 Campus Tour 10:30  
**COME AWAY BMR** 1:30  
**HEDLEY THO** 1:30  
 Talkback-after *Come Away* **BMR**  
 Preface-Emma **CARP** 5:30  
 Green Show **GSS** 6:30  
**YELLOW BMR** 8:00  
**SMOTE THIS THO** 8:00  
**EMMA ALLEN** 8:00

**29**  
 Campus Tour 10:30  
 Preface-Dream **CARP** 12:00  
**DREAM BMR** 1:30  
**SMOTE THIS THO** 1:30  
 Preface-Come Away **CARP** 5:30  
 Green Show **GSS** 6:30  
**COME AWAY BMR** 8:00  
**HEDLEY THO** 8:00  
**HENRY IV:1 ALLEN** 8:00

**30**  
**YELLOW BMR** 1:30  
**SMOTE THIS THO** 1:30  
**DREAM BMR** 8:00  
**SHREW ALLEN** 8:00

### KEY

<b>P</b>	previews	<b>BMR</b>	Angus Bowmer Theatre
<b>O</b>	opens	<b>THO</b>	Thomas Theatre
<b>C</b>	closes	<b>GSS</b>	Green Show Stage
		<b>CARP</b>	Carpenter Hall
		<b>NEW</b>	New Place



# SEPTEMBER 2026

SUNDAY

MONDAY

TUESDAY

WEDNESDAY

THURSDAY

FRIDAY

SATURDAY

## SEPTEMBER 1 2

**N**  
**DREAM BMR** 1:30  
Preface-Henry **CARP** 5:30  
Green Show **GSS** 6:30  
**O**  
**COME AWAY BMR** 8:00  
**HENRY IV: 1 ALLEN** 8:00

Behind Curtain Tour 9:30  
Preface-Yellow **CARP** 12:00  
**YELLOW BMR** 1:30  
**SMOTE THIS THO** 1:30  
Preface-Shrew **CARP** 5:30  
Green Show **GSS** 6:30  
**DREAM BMR** 8:00  
**HEDLEY THO** 8:00  
**SHREW ALLEN** 8:00

**P**

**L**  
**8**  
**YELLOW BMR** 1:30  
**SMOTE THIS THO** 1:30  
Preface-Shrew **CARP** 5:30  
Green Show **GSS** 6:30  
**A**  
**DREAM BMR** 8:00  
**SHREW ALLEN** 8:00

**9**  
Behind Curtain Tour 9:30  
Preface-Dream **CARP** 12:00  
**DREAM BMR** 1:30  
**SMOTE THIS THO** 1:30  
Preface-Henry **CARP** 5:30  
Green Show **GSS** 6:30  
**COME AWAY BMR** 8:00  
**HEDLEY THO** 8:00  
**HENRY IV: 1 ALLEN** 8:00

**Y**

**S**

**6**  
**COME AWAY BMR** 1:30  
**HEDLEY THO** 1:30  
**YELLOW BMR** 8:00  
**SMOTE THIS THO** 8:00  
**EMMA ALLEN** 8:00

**4**  
Behind Curtain Tour 9:30  
Campus Tour 10:30  
**DREAM BMR** 1:30  
**SMOTE THIS THO** 1:30  
Talkback-after **Dream BMR**  
Preface-Hedley **CARP** 5:30  
Green Show **GSS** 6:30  
**COME AWAY BMR** 8:00  
**HEDLEY THO** 8:00  
**HENRY IV: 1 ALLEN** 8:00

**5**  
Campus Tour 10:30  
Preface-Yellow **CARP** 12:00  
**YELLOW BMR** 1:30  
**SMOTE THIS THO** 1:30  
Talkback-after **Smote THO**  
Preface-Dream **CARP** 5:30  
Green Show **GSS** 6:30  
**DREAM BMR** 8:00  
**SMOTE THIS THO** 8:00  
**SHREW ALLEN** 8:00

**11**  
Behind Curtain Tour 9:30  
Campus Tour 10:30  
**COME AWAY BMR** 1:30  
**HEDLEY THO** 1:30  
Talkback-after **Come Away BMR**  
Preface-Shrew **CARP** 5:30  
Green Show **GSS** 6:30  
**DREAM BMR** 8:00  
**SMOTE THIS THO** 8:00  
**SHREW ALLEN** 8:00

**12**  
Campus Tour 10:30  
Preface-Yellow **CARP** 12:00  
**YELLOW BMR** 1:30  
**SMOTE THIS THO** 1:30  
Talkback-after **Smote THO**  
Preface-Henry **CARP** 5:30  
Green Show **GSS** 6:30  
**COME AWAY BMR** 8:00  
**HEDLEY THO** 8:00  
**HENRY IV: 1 ALLEN** 8:00

**13**  
**DREAM BMR** 1:30  
**SMOTE THIS THO** 1:30  
**YELLOW BMR** 8:00  
**EMMA ALLEN** 8:00

**15**  
**DREAM BMR** 1:30  
**SMOTE THIS THO** 1:30  
Preface-Yellow **CARP** 5:30  
Green Show **GSS** 6:30  
**YELLOW BMR** 8:00  
**EMMA ALLEN** 8:00

**16**  
Behind Curtain Tour 9:30  
Preface-Hedley **CARP** 12:00  
**COME AWAY BMR** 1:30  
**HEDLEY THO** 1:30  
Preface-Shrew **CARP** 5:30  
Green Show **GSS** 6:30  
**DREAM BMR** 8:00  
**HEDLEY THO** 8:00  
**SHREW ALLEN** 8:00

**17**  
Behind Curtain Tour 9:30  
**YELLOW BMR** 1:30  
**SMOTE THIS THO** 1:30  
Preface-Henry **CARP** 5:30  
Green Show **GSS** 6:30  
**COME AWAY BMR** 8:00  
**HEDLEY THO** 8:00  
**HENRY IV: 1 ALLEN** 8:00

**18**  
Behind Curtain Tour 9:30  
Campus Tour 10:30  
**DREAM BMR** 1:30  
**SMOTE THIS THO** 1:30  
Talkback-after **Dream BMR**  
Preface-Emma **CARP** 5:30  
Green Show **GSS** 6:30  
**YELLOW BMR** 8:00  
**SMOTE THIS THO** 8:00  
**EMMA ALLEN** 8:00

**19**  
Campus Tour 10:30  
Preface-Come Away **CARP** 12:00  
**COME AWAY BMR** 1:30  
**HEDLEY THO** 1:30  
Talkback-after **Hedley THO**  
Preface-Dream **CARP** 5:30  
Green Show **GSS** 6:30  
**DREAM BMR** 8:00  
**SMOTE THIS THO** 8:00  
**SHREW ALLEN** 8:00

**O**

**N**

**20**  
**YELLOW BMR** 1:30  
**SMOTE THIS THO** 1:30  
**COME AWAY BMR** 8:00  
**HENRY IV: 1 ALLEN** 8:00

**22**  
**YELLOW BMR** 1:30  
Preface-Henry **CARP** 5:30  
Green Show **GSS** 6:30  
**COME AWAY BMR** 8:00  
**HEDLEY THO** 8:00  
**HENRY IV: 1 ALLEN** 8:00

**23**  
Behind Curtain Tour 9:30  
Preface-Dream **CARP** 12:00  
**DREAM BMR** 1:30  
**SMOTE THIS THO** 1:30  
Preface-Yellow **CARP** 5:30  
Green Show **GSS** 6:30  
**YELLOW BMR** 8:00  
**EMMA ALLEN** 8:00

**24**  
Behind Curtain Tour 9:30  
**COME AWAY BMR** 1:30  
**HEDLEY THO** 1:30  
Preface-Shrew **CARP** 5:30  
Green Show **GSS** 6:30  
**DREAM BMR** 8:00  
**SMOTE THIS THO** 8:00  
**SHREW ALLEN** 8:00

**25**  
Behind Curtain Tour 9:30  
Campus Tour 10:30  
**YELLOW BMR** 1:30  
**SMOTE THIS THO** 1:30  
Talkback-after **Yellow BMR**  
Preface-Henry **CARP** 5:30  
Green Show **GSS** 6:30  
**COME AWAY BMR** 8:00  
**HEDLEY THO** 8:00  
**HENRY IV: 1 ALLEN** 8:00

**26**  
Campus Tour 10:30  
Preface-Dream **CARP** 12:00  
**DREAM BMR** 1:30  
**SMOTE THIS THO** 1:30  
Preface-Emma **CARP** 5:30  
Green Show **GSS** 6:30  
**YELLOW BMR** 8:00  
**SMOTE THIS THO** 8:00  
**EMMA ALLEN** 8:00

**M**

**O**

**N**

**D**

**27**  
**COME AWAY BMR** 1:30  
**HEDLEY THO** 1:30  
**DREAM BMR** 8:00  
**SMOTE THIS THO** 8:00  
**SHREW ALLEN** 8:00

**29**  
**COME AWAY BMR** 1:30  
**HEDLEY THO** 1:30  
Preface-Shrew **CARP** 5:30  
**DREAM BMR** 8:00  
**SHREW ALLEN** 8:00

**30**  
Behind Curtain Tour 9:30  
Preface-Dream **CARP** 12:00  
**DREAM BMR** 1:30  
**SMOTE THIS THO** 1:30  
Preface-Yellow **CARP** 5:30  
**YELLOW BMR** 8:00  
**EMMA ALLEN** 8:00

**A**

**Y**

**S**

## VISIT THE OSF GIFT SHOP

No trip to OSF is complete without a stop in our **group-friendly Gift Shop**. You'll find us right on the corner of Main and Pioneer.

- Preface: See page 26.
- Campus Tour: See page 24.
- Behind Curtain Tour: See page 24.
- Talkback: See page 29.
- Green Show: Concerts on the Bricks. Free.

### KEY

<b>BMR</b>	Angus Bowmer Theatre
<b>THO</b>	Thomas Theatre
<b>ALLEN</b>	Allen Elizabethan Theatre
<b>GSS</b>	Green Show Stage
<b>CARP</b>	Carpenter Hall

# OCTOBER 2026

SUNDAY

MONDAY

TUESDAY

WEDNESDAY

THURSDAY

FRIDAY

SATURDAY

**4**  
DREAM **BMR** 1:30  
SMOTE THIS **THO** 1:30  
COME AWAY **BMR** 8:00  
HENRY IV: 1 **ALLEN** 8:00

**11**  
YELLOW **BMR** 1:30  
SMOTE THIS **THO** 1:30  
DREAM **BMR** 8:00  
SHREW **ALLEN** 8:00

**18**  
DREAM **BMR** 1:30  
SMOTE THIS **THO** 1:30  
YELLOW **BMR** 8:00

**25**  
DREAM **BMR** 1:30

N  
O  
P  
L  
A  
Y  
S  
O  
N  
M  
O  
N  
D  
A  
Y  
S

**6**  
Preface-Yellow **CARP** 5:30  
YELLOW **BMR** 8:00  
EMMA **ALLEN** 8:00

**13**  
COME AWAY **BMR** 1:30  
HEDLEY **THO** 1:30  
Preface-Dream **CARP** 5:30  
DREAM **BMR** 8:00

**20**  
YELLOW **BMR** 1:30  
SMOTE THIS **THO** 1:30  
Preface-Come Away **CARP** 5:30  
COME AWAY **BMR** 8:00

**7**  
Behind Curtain Tour 9:30  
Preface-Dream **CARP** 12:00  
DREAM **BMR** 1:30  
SMOTE THIS **THO** 1:30  
Preface-Hedley **CARP** 5:30  
COME AWAY **BMR** 8:00  
HEDLEY **THO** 8:00  
HENRY IV: 1 **ALLEN** 8:00

**14**  
Behind Curtain Tour 9:30  
Preface-Yellow **CARP** 12:00  
YELLOW **BMR** 1:30  
SMOTE THIS **THO** 1:30  
Preface-Come Away **CARP** 5:30  
COME AWAY **BMR** 8:00

**21**  
Behind Curtain Tour 9:30  
Preface-Dream **CARP** 12:00  
DREAM **BMR** 1:30  
SMOTE THIS **THO** 1:30  
Preface-Yellow **CARP** 5:30  
YELLOW **BMR** 8:00

## OCTOBER 1

Behind Curtain Tour 9:30  
YELLOW **BMR** 1:30  
HEDLEY **THO** 1:30  
Preface-Hedley **CARP** 5:30  
COME AWAY **BMR** 8:00  
HEDLEY **THO** 8:00  
HENRY IV: 1 **ALLEN** 8:00

**8**  
Behind Curtain Tour 9:30  
YELLOW **BMR** 1:30  
SMOTE THIS **THO** 1:30  
Preface-Shrew **CARP** 5:30  
DREAM **BMR** 8:00  
SHREW **ALLEN** 8:00

**15**  
Behind Curtain Tour 9:30  
DREAM **BMR** 1:30  
SMOTE THIS **THO** 1:30  
Preface-Yellow **CARP** 5:30  
YELLOW **BMR** 8:00

**22**  
Behind Curtain Tour 9:30  
COME AWAY **BMR** 1:30  
HEDLEY **THO** 1:30  
Preface-Dream **CARP** 5:30  
DREAM **BMR** 8:00

**2**

Behind Curtain Tour 9:30  
YELLOW **BMR** 1:30  
SMOTE THIS **THO** 1:30  
Talkback-after Yellow **BMR**  
Preface-Shrew **CARP** 5:30  
DREAM **BMR** 8:00  
SMOTE THIS **THO** 8:00  
SHREW **ALLEN** 8:00

**9**

Behind Curtain Tour 9:30  
COME AWAY **BMR** 1:30  
HEDLEY **THO** 1:30  
Talkback-after Come Away **BMR**  
Preface-Emma **CARP** 5:30  
YELLOW **BMR** 8:00  
SMOTE THIS **THO** 8:00  
EMMA **ALLEN** 8:00

**16**

Behind Curtain Tour 9:30  
COME AWAY **BMR** 1:30  
HEDLEY **THO** 1:30  
Talkback-after Come Away **BMR**  
Preface-Dream **CARP** 5:30  
DREAM **BMR** 8:00  
SMOTE THIS **THO** 8:00

**23**

Behind Curtain Tour 9:30  
COME AWAY **BMR** 1:30  
HEDLEY **THO** 1:30  
Talkback-after Come Away **BMR**  
Preface-Yellow **CARP** 5:30  
YELLOW **BMR** 8:00  
SMOTE THIS **THO** 8:00

**3**

Preface-Come Away **CARP** 12:00  
COME AWAY **BMR** 1:30  
HEDLEY **THO** 1:30  
Talkback-after Hedley **THO**  
Preface-Emma **CARP** 5:30  
YELLOW **BMR** 8:00  
SMOTE THIS **THO** 8:00  
EMMA **ALLEN** 8:00

**10**

Preface-Dream **CARP** 12:00  
DREAM **BMR** 1:30  
SMOTE THIS **THO** 1:30  
Talkback-after Smote **THO**  
Preface-Henry **CARP** 5:30  
COME AWAY **BMR** 8:00  
HEDLEY **THO** 8:00  
HENRY IV: 1 **ALLEN** 8:00

**17**

YELLOW **BMR** 1:30  
SMOTE THIS **THO** 1:30  
Talkback-after Smote **THO**  
Preface-Hedley **CARP** 5:30  
COME AWAY **BMR** 8:00  
HEDLEY **THO** 8:00

**24**

SMOTE THIS **THO** 1:30  
Talkback-after Smote **THO**  
Preface-Hedley **CARP** 5:30  
COME AWAY **BMR** 8:00  
HEDLEY **THO** 8:00

- Preface: See page 26.
- Behind Curtain Tour: See page 24.
- Talkback: See page 29.

## GOLD? HERE'S A COOL IDEA.

On chilly nights in our outdoor Allen Elizabethan Theatre, rent a handmade pillow or fleece blanket to keep you warm and cozy throughout the show. Visit the **Soroptimists' counter** (near the Access Booth in the concessions area) and know that your rental supports local education for women and girls.

### KEY

<b>C</b>	closes
<b>BMR</b>	Angus Bowmer Theatre
<b>THO</b>	Thomas Theatre
<b>ALLEN</b>	Allen Elizabethan Theatre
<b>CARP</b>	Carpenter Hall



# 2026 TICKET PRICES FOR GROUPS

Prices represent a **20% Group Discount** off full price\*.

## Angus Bowmer & Allen Elizabethan Theatres

(*A Midsummer Night's Dream; Come From Away; A Raisin in the Sun; Yellow Face; The Taming of the Shrew; Henry IV, Part One; Emma*)

Seating Zone	Previews	Tuesday & Sunday Evenings	All Other Times
C	\$34	\$36	\$42
B	\$45	\$51	\$60
A	\$61	\$71	\$87
A+*	\$102	\$121	\$141

## Thomas Theatre

(*You Are Cordially Invited to the End of the World!; August Wilson's King Hedley II*)

Seating Zone	Previews	Tuesday & Sunday Evenings	All Other Times
C	\$34	\$36	\$42
B	\$50	\$55	\$65
A	\$72	\$85	\$101

## Thomas Theatre Solo Show

(*Smote This, A Comedy About God...and Other Serious \$H\*T*)

Seating Zone	Previews	Tuesday & Sunday Evenings	All Other Times
C	\$26	\$28	\$34
B	\$39	\$43	\$49
A	\$56	\$66	\$80

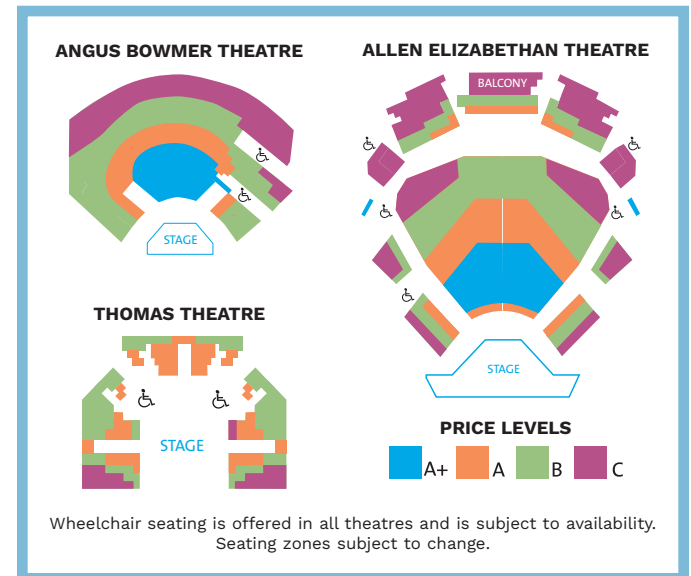
\* No group discount for A+ seating zone.

Ticket prices listed above are per person and include a \$5-per-ticket fee that helps support our campus infrastructure and the audience experience.

Prices subject to change.

# GROUP TICKET ORDERING CHECKLIST

- Choose your plays. Refer to play descriptions on pages 4-23 or contact our Group Sales staff for recommendations.
- Choose your Education events and tours by browsing their descriptions on pages 24-31.
- Contact Group Sales at (866) 545-6337 or [groupsales@osfashland.org](mailto:groupsales@osfashland.org) with your preferred dates, events, and group size. Space is limited, so please reach out at least four weeks before your first performance. A \$10 per ticket deposit is required at booking.
- Phones open December 2, 2025, for the 2026 season. Mail or email orders are welcome at any time.
- Four weeks before your first performance date, the balance of your total order is due. No refunds or exchanges are available after this date.



## OSF Group Sales

[groupsales@osfashland.org](mailto:groupsales@osfashland.org) • (866) 545-6337  
 15 S. Pioneer St., Ashland, OR 97520  
[osfashland.org/groups](http://osfashland.org/groups)










Benjamin Jackson, Montez Greer, and Ashtin Stone, ASL interpreters for *The Merry Wives of Windsor*. Photo by Joe Sofranko.

## ACCESSIBILITY

We are committed to offering FREE services that make our programs accessible to all visitors. OSF abides by all applicable ADA ticket policies, with ADA seating available at every price level.

We offer the following Access Services at all performances in our theatres, pending availability:

-  Mobility assistance, elevators, and accessible bathrooms
-  ADA seating, stair-free seating, armless chairs, and bariatric chairs
-  Assistive Listening Devices
-  Large Print Playbills
-  Caption services (two weeks' notice recommended)
-  Audio Description (two weeks' notice required)
-  ASL Interpreting (at selected performances)

For more information about Access Services visit [osfashland.org/access](https://osfashland.org/access).



Photo by Joe Sofranko.



## GROUP-FRIENDLY ATTRACTIONS & LODGING

Bringing a big group to Ashland? These group-ready businesses are here to help you turn your visit into something unforgettable.

### LOVEJOY'S TEAROOM

Your tour group will be delighted and enchanted by our English Style Tearoom. We offer a traditional, multicourse Afternoon Tea Service which includes delicate tea sandwiches, warm scones with clotted cream and preserves, crumpets with lemon curd and so much more. Guests will have a memorable experience enjoying the ritual of taking tea in a most unique and magical setting. Guests often proclaim that Lovejoy's was a highlight of their visit to Ashland. Groups of up to 60 can be accommodated.

[www.shoplovejoystearoom.com](http://www.shoplovejoystearoom.com)

### ROGUE VALLEY SYMPHONY

Music Flourishes in Our Hands. The Rogue Valley Symphony proudly makes Ashland their home. With performances August - May each year, and a special engagement at the Angus Bowmer Theatre each December, we are the perfect add-on to your arts adventure.

Visit [www.rvsymphony.org](http://www.rvsymphony.org) TODAY

### SCHNEIDER MUSEUM OF ART

Just minutes from the OSF stages, the Schneider Museum of Art offers contemporary exhibitions year-round, featuring the work of living artists. Enjoy free admission every day, plus free group tours with reservation that spark curiosity and connection.

Plan your visit today at [www.sma.sou.edu](http://www.sma.sou.edu)

### SCIENCEWORKS HANDS-ON MUSEUM

Science & imagination collide at ScienceWorks Hands-On Museum, a vibrant hub for curiosity, creativity & discovery in Ashland, OR. ScienceWorks invites curious minds of all ages to explore STEAM — science, technology, engineering, arts & mathematics — through playful exhibits, workshops & programs.

[www.ScienceWorksMuseum.org](http://www.ScienceWorksMuseum.org)

### ASHLAND HILLS HOTEL & SUITES

Resort-style hotel with modern-retro flair. Just minutes from downtown Ashland. Spacious rooms and stylish suites. Beautiful mountain view setting. Outdoor pool and relaxing hot tub. On-site dining, Luna Café. Tennis and pickleball courts. Perfect for groups & events.

[www.ashlandhillshotel.com](http://www.ashlandhillshotel.com)

### ASHLAND SPRINGS HOTEL

Historic hotel in downtown Ashland. Steps from OSF, dining, shopping. European-style charm. Award-winning Larks Restaurant. Waterstone Spa right next door. Afternoon tea & fresh cookies. Free gated parking & fitness pass. Perfect for groups & events.

[www.ashlandspringshotel.com](http://www.ashlandspringshotel.com)

### THE WINCHESTER INN

This award-winning 23-room unique inn with luxury guest rooms & suites includes a complimentary 2-course breakfast. Nestled amid English gardens, the Winchester has 2 restaurants. Seats groups 25-120. 2 blocks to theaters, 1 block to downtown. Family owned & operated since 1983. Top 10 inns - USA TODAY in 2024 & 2025.

[www.winchesterinn.com](http://www.winchesterinn.com)



Ashland's Main Street.  
Photo by Joe Sofranko.

# MAKE OSF THE HEART OF YOUR GROUP GETAWAY

Nestled in charming Ashland, the Oregon Shakespeare Festival is the perfect centerpiece for a group getaway to Southern Oregon. Just a scenic drive from the Bay Area or Portland, Ashland blends world-class theatre with small-town warmth, natural beauty, and rich cultural experiences. Whether you're planning a day trip or a multi-day adventure, OSF offers an unforgettable shared experience at the heart of it all.



## FOR MORE GROUP SALES INFO:



**OSF Group Sales**  
groupsales@osfashland.org  
(866) 545-6337  
15 S. Pioneer St., Ashland, OR 97520  
osfashland.org/groups

Phones open December 2, 2025, for the 2026 season.  
Mail or email orders are welcome at any time.



Photos by Joe Sofranko.



Front cover: *Into the Woods* (2025):  
Justin Huertas, Cedric Lamar, Bebe Browning,  
Kjerstine Rose Anderson, Rhea Bradley,  
Teri Brown, Photo by Jenny Graham.



**Oregon**  
**Shakespeare**  
**Festival®**

15 South Pioneer Street  
P.O. Box 158  
Ashland, OR 97520

NON-PROFIT ORG.  
US POSTAGE  
**PAID**  
MEDFORD, OR  
PERMIT NO. 110

**TICKETS AND INFO**

**OSFASHLAND.ORG**