

Oregon Shakespeare Festival.

2026 MEMBER PRESALE ORDERING GUIDE



Into the Woods (2025); Ensemble. Photo by Jenny Graham.

**MEMBERS GET 10% OFF TICKETS ALL YEAR!
ORDER EARLY FOR BEST SELECTION**

WELCOME TO OUR 2026 SEASON

Our 2026 season reminds us that theatre is a place where we come together to reflect, to celebrate, and to find courage. These plays center characters who are asked to rise—sometimes for themselves, sometimes for others—and who discover that the path forward is rarely walked alone. It's a season for audiences to see the possibility of what happens when we meet the moment.

Please join us for next year's powerful, joyful season—a celebration of what we've achieved together.



—Tim Bond, OSF Artistic Director

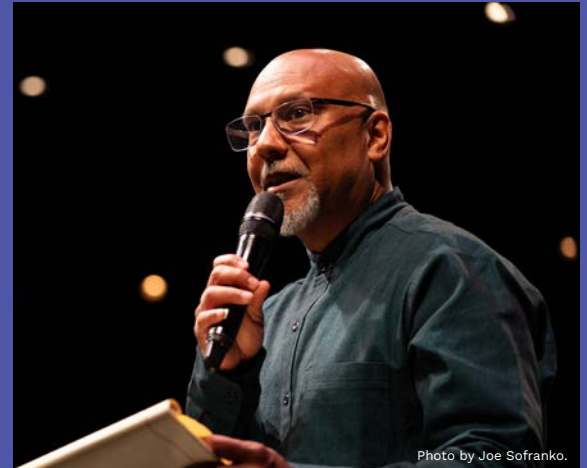


Photo by Joe Sfranko.

HOW TO ORDER DURING PRESALE

- **Choose the performances** you'd like by browsing the **show descriptions** (pgs 4–8) and **season calendar** (13–20) or online at osfashland.org.
- **Choose tours, classes, and exclusive member events** by browsing the **event descriptions** (pgs 9–12) and **calendar** (13–20).
- As a member, you'll get a **10% Member Discount** on all shows, all seats, all season. (*The discount applies to all play tickets, but not to Education events, member-exclusive events, or tours listed in this guide.*)
- Decide whether you'd like to purchase **Season Ticket Insurance** (see page 23) for \$50 for the year, which must be purchased when you place your ticket order.
- **Find the presale dates for your membership category** on the "Presale Start Dates" chart on the next page. (If you're not sure of your membership level, check your osfashland.org account or see the chart on the back of this brochure.)
- **On or after your category's Presale Start Date**, but before December 2:

ORDER BY WEB: osfashland.org or

ORDER BY PHONE: (800) 219-8161

ONLINE & PHONE ORDERING TIPS

Presale Prerequisites

You must be a current member. To order tickets online, you must register or update your current email address, if you haven't done so already.

Online Presale Access Tips

Test your login and password on the OSF website prior to your Presale Access period (see chart on facing page). When you order online, log in before doing anything else.

Phone Presale Access Tips

The volume of phone orders will be heavy at the beginning of each level's Presale Access period. Please know we will get to your phone call as quickly as possible.

Mobile Tickets

Your tickets will be available within 7 days of your performance by logging into your OSF account at osfashland.org. Once logged in, click Account, then My Upcoming Tickets to view tickets. From here, you can print your mobile tickets if you would prefer.

Presale Box Office Phone Hours

Phones are open Tuesday–Sunday, 10:00 a.m.–4:00 p.m. (Pacific Time). Closed on Mondays.

Call 800-219-8161.

Our in-person Box Office will be closed during Presale. Orders will only be accepted by web or phone.

At OSF, our members—you—are our strongest partners and allies in bringing the art of theatre to life. From building the sets to hiring the actors to lights, sound, and costumes, we literally couldn't do it without your support.

And here we are with you, doing it again for **our exciting 2026 season!** This year, on top of a lineup of 10 amazing shows and your **10% Member Discount to any of them, all season**, we're adding **a few events that we only offer to members—exclusive tours, discussions, and member weekends** to deepen your connection to the art onstage and the company. Please browse the plays and events, get ready to order—and if you have any questions, **our friendly Membership and Development team is only an email or phone call away.**

I'm so grateful for your partnership, and I can't wait to see you on the Bricks in 2026!

—Jennifer Ryen, Chief Philanthropy Officer



IMPORTANT DATES FOR MEMBERS

PRESALE START DATES BY MEMBERSHIP CATEGORY

Web and phone orders begin at 10:00 a.m. Pacific Time on the first day of your category (below) and ends on Dec. 1. **Web sales only on Mondays.**

Nov. 4, 2025 (Tues) Artistic Director's Circle and Century Circle — \$25,000+

Nov. 5, 2025 (Weds) Chautauqua Guild and Chautauqua Guild Circle — \$6,000–\$24,999

Nov. 6, 2025 (Thurs) Producer and Producers' Circle — \$1,250–\$5,999

Nov. 11, 2025 (Tues) Benefactor — \$600–\$1,249

Nov. 13, 2025 (Thurs) Patron — \$200–\$599

Nov. 18, 2025 (Tues) Sustainer — \$75–\$199

Dec. 2, 2025 (Tues) Presale concludes; 1935ers and General Sales begin

2026 MEMBER WEEKENDS

Join us for these exciting weekends of discussions and gatherings to deepen your connection to OSF. For pricing on Member Event bonus activities (such as dinners) and how to order, see page 23; see Member Event times on the calendar (pgs 13–20). For more information or to upgrade your membership level, contact the **Membership & Development office at Membership@osfashland.org or (541) 488-3880.**

Season Opening Weekend • March 20–22

Producer level (\$1,250) and above

Artistic Director's Circle Dinner • March 21

Artistic Director's Circle level (\$25,000) and above

Spring Southampton Legacy Event • April 16–18

Southampton Legacy members and Producer level (\$1,250) and above

Immersive Weekend I (Outdoor Opening) • June 19–21

Producer level (\$1,250) and above

Chautauqua Guild Weekend • July 17–19

Dinner: Chautauqua Guild level (\$6,000) and above
Panels: Producer level (\$1,250) and above

Immersive Weekend II • August 7–9

Producer level (\$1,250) and above

Fall Southampton Legacy Event • September 25–27

Dinner: Southampton Legacy members
Panels: Southampton Legacy members and Producer level (\$1,250) and above

INTRODUCING THE SHOWS OF 2026

A MIDSUMMER NIGHT'S DREAM



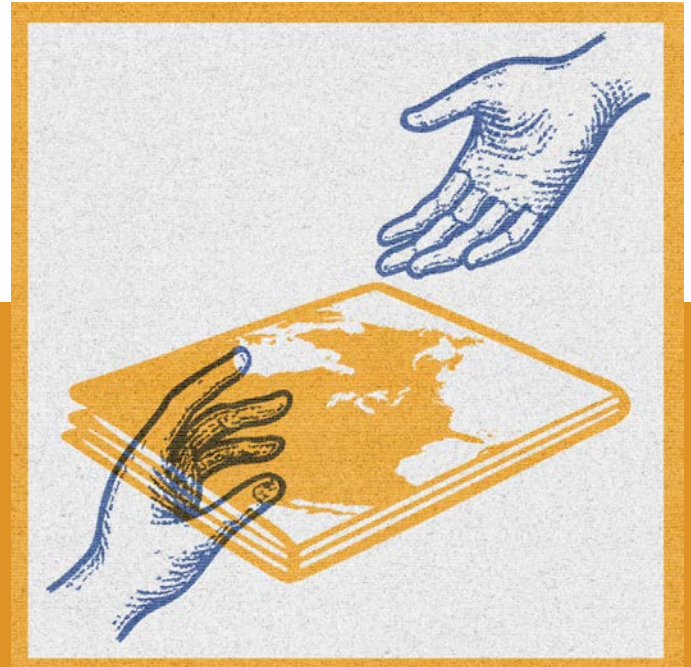
“THE COURSE OF TRUE LOVE NEVER DID RUN SMOOTH”

By **William Shakespeare**
Directed by **Marcela Lorca**

Angus Bowmer Theatre
March 13 – October 25, 2026

When Hermia, Lysander, Helena, and Demetrius flee into the woods, they do it in pursuit of personal freedom and their one true love. But making their way through the forest is particularly tricky under the influence of the mischievous Puck’s spells. The line between truth and illusion blurs as the couples are drawn into a dream world that is as dark and mysterious as it is marvelous and full of wonder, where magic reigns and nothing is quite as it seems. Shakespeare’s timeless romantic comedy returns to OSF with original music by Justin Huertas (*Lizard Boy*) in an enchanting production, under the direction of Marcela Lorca (*The Count of Monte Cristo*).

COME FROM AWAY



THE DAY THE WORLD STOPPED

Book, Music, and Lyrics by
Irene Sankoff and David Hein
Directed by **Laurie Woolery**
Choreographed by **Sunny Min-Sook Hitt**

Angus Bowmer Theatre
March 14 – October 24, 2026

In the hours following September 11, 2001, as planes were grounded and uncertainty swept the globe, 7,000 stranded air travelers landed in the remote town of Gander, Newfoundland. With no time to prepare, the people of Gander opened their homes, their hearts, and their lives to these complete strangers. This Tony and Olivier Award-winning musical, based on that astonishing true story, unfolds through a propulsive, folk-inspired score and a cast of unforgettable real-life characters. A heart-forward, joyful celebration of resilience, *Come From Away* reminds audiences of all ages of the power of community in the darkest of times.

This production of *Come From Away* was licensed by Music Theatre International.

A RAISIN IN THE SUN



**“WHAT HAPPENS TO
A DREAM DEFERRED?”**

By **Lorraine Hansberry**
Directed by **Tim Bond**

Angus Bowmer Theatre
March 15 – July 19, 2026

On the South Side of 1950s Chicago, the Younger family lives under one roof, bound together by love, struggle, and shelved dreams. When a life insurance check arrives after the death of their father, it sparks a chance to break free—from poverty, from their cramped apartment, and from the limits of a deeply segregated society. But each family member sees a different future, and the choices they make test everything they believe about identity, pride, and possibility. One of the greatest American dramas ever written, Lorraine Hansberry’s *A Raisin in the Sun* is fierce, tender, and as urgent now as when it first debuted in 1959. OSF Artistic Director Tim Bond brings to life a powerful revival of this seminal work *The New York Times* called “The play that changed American theatre forever.”

A *Raisin in the Sun* is presented by arrangement with Concord Theatricals on behalf of Samuel French, Inc. www.concordtheatricals.com

YELLOW FACE



**A SMART, SEMI-AUTOBIOGRAPHICAL
COMEDY ABOUT THE MASKS
WE WEAR**

By **David Henry Hwang**
Directed by **May Adrales**

Angus Bowmer Theatre
August 5 – October 23, 2026

When DHH—a Chinese American playwright and staunch activist—protests the casting of a white actor in *Miss Saigon*, he never imagines he’ll make the same mistake himself. But after accidentally casting a white actor in the lead Asian role of his own play, he scrambles to cover his tracks, spinning an increasingly ridiculous web of half-truths, media frenzy, and personal contradictions. Pulitzer Prize finalist *Yellow Face* is a laugh-out-loud mockumentary that skewers the worlds of theatre, identity politics, and public image with razor-sharp wit. Fresh off a thrilling Broadway run, David Henry Hwang’s hilarious and thought-provoking Tony-nominated play comes to OSF in a new production directed by May Adrales (*Vietgone*).

Yellow Face is presented by special arrangement with Broadway Licensing, LLC, servicing the Dramatists Play Service imprint. (www.dramatists.com)

YOU ARE CORDIALLY INVITED TO THE END OF THE WORLD!



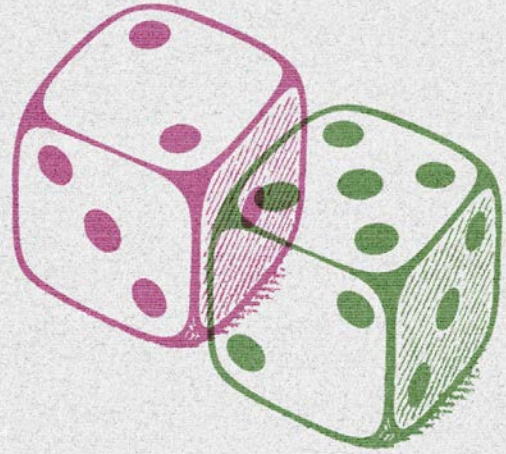
A RAUCOUS COMEDY ABOUT THE UNTHINKABLE

By **Keiko Green**
Directed by **Zi Alikhan**

Thomas Theatre
April 16 – August 21, 2026

Greg's been so good: he recycles, eats right, loves his wife, and has only a *slightly* uncomfortable relationship with his grown-up kid. But when he's faced with a terminal illness, he becomes obsessed with the fate of the planet while his wife and child try to cope with their own worlds ending. This play about grief—and cringe-y family dinners, and lawnmowers, and Greta Thunberg, and gay bars, and awkward support groups—is an exquisitely touching and hilarious play that anyone who's ever lost a loved one (or laughed at a funeral) can relate to.

AUGUST WILSON'S KING HEDLEY II



"I WANT EVERYBODY TO KNOW THAT KING HEDLEY II IS HERE..."

By **August Wilson**
Directed by **Tim Bond**

Thomas Theatre
July 16 – October 24, 2026

It's 1985, and King returns to his family and community, determined to take control of his life after having served seven years in prison. He patches together odd jobs—some legal, some not, hoping to open a video store and build a new future. Two-time Pulitzer Prize-winning playwright August Wilson has created a mythic and metaphysical landscape full of unabashed lyricism amongst the crumbling black neighborhood of Pittsburgh's Hill District. Like the hero of a Greek tragedy, King seeks redemption from a past that still haunts him: the murder that changed his life, old vendettas that won't die, and an explosive secret his mother has kept hidden. Director Tim Bond brings his love of August Wilson, along with a powerhouse cast, to this poetically tragic epic about systems of violence and intergenerational poverty, the ninth play in Wilson's American Century Cycle. *King Hedley II* continues OSF's commitment to August Wilson's monumental American Century Cycle.

August Wilson's *King Hedley II* is presented by arrangement with Concord Theatricals on behalf of Samuel French, Inc. www.concordtheatricals.com

SMOTE THIS, A COMEDY ABOUT GOD... AND OTHER SERIOUS \$H*T



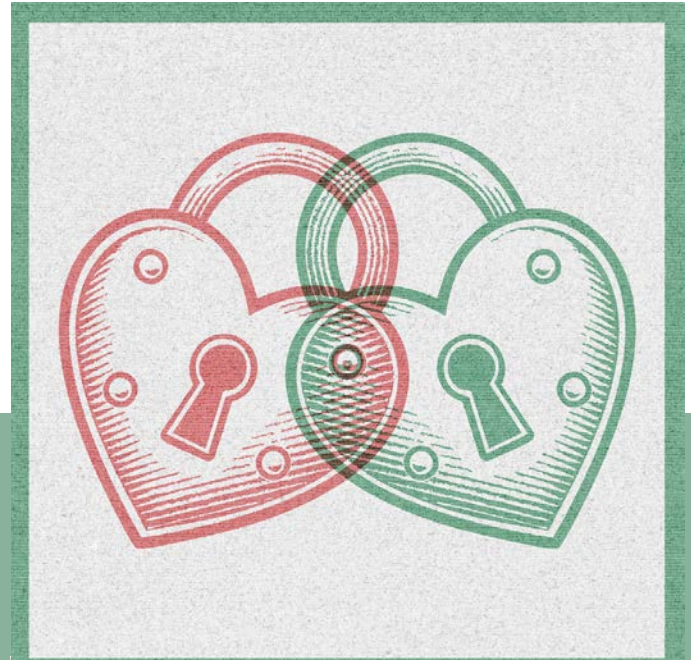
**AN ENCORE OF THE HIT SOLO SHOW
FROM RODNEY GARDINER**

Created and performed by **Rodney Gardiner**
Directed by **Raz Golden**

Thomas Theatre
August 27 – October 24, 2026

Back by popular demand, this sharp and hilarious solo show follows actor Rodney Gardiner as he attempts to abandon God—no easy feat for a devoutly raised, undocumented Black boy growing up in tumultuous 1980s Miami. For young Rodney, dealing with racial unrest, an immigration crisis, and the drug war is just another Tuesday. *Smote This* spins an entertaining web of personal stories and hilarious tangents that land with equal parts heart and heat. OSF is thrilled to welcome back Rodney, who has riveted our audiences for years in everything from musicals to Shakespeare.

THE TAMING OF THE SHREW



**ALL'S FAIR IN THE
WAR OF LOVE**

By **William Shakespeare**
Directed by **Shana Cooper**

Allen Elizabethan Theatre
June 5 – October 11, 2026

Sweet-natured Bianca has her choice of suitors, but there's a problem: she can't get married until her older sister, Kate, also gets hitched. And Kate—strong-willed, sharp-tongued—is not onboard with any of that. When a stranger, Petruchio, comes to town, he hatches a plan to win Kate, but it's not easy romancing an unbothered single woman who dishes out insults at lightning speed. Wordplay crackles and passions run high as this iconoclastic couple forges an unconventional path to love in this uproarious Shakespeare comedy. Directed by Shana Cooper (*The Unfortunates*, *Indecent*), this bold production turns the tables on tradition, inviting us to question everything we think we know about courtship, gender, and power.

HENRY IV, PART ONE



A KINGDOM ON THE BRINK

By **William Shakespeare**
Directed by **Rosa Joshi**

Allen Elizabethan Theatre
June 6 – October 10, 2026

King Henry IV is in trouble: a faction of his allies, including a valiant youngster named Hotspur, have turned on him and are now gunning for his throne. And his own son, Prince Hal, is no help, spending all his time languishing with his low-life drinking buddies and a corrupt knight, Falstaff, who holds a strange sway over the kid. Will Hal ever come around and act like the king he will be one day? Shakespeare's iconic history play is a stirring coming-of-age story, filled with humor, romance, and intrigue. Associate Artistic Director Rosa Joshi (*Henry V*, *Julius Caesar*) directs.

EMMA



GAME. SET. MATCHMAKE.

By **Kate Hamill**
Based on the novel by **Jane Austen**
Directed by **Meredith McDonough**

Allen Elizabethan Theatre
June 7 – October 9, 2026

Jane Austen's beloved Regency-era heroine takes center stage in this fast, funny, feminist adaptation by Kate Hamill, featuring contemporary pop music and a screwball-comedy spirit. Emma believes she has it all figured out, especially when it comes to other people's love lives. The self-appointed matchmaker means well, but in a world with few options for women beyond marriage, her meddling leads to a bevy of misadventures, mishaps, and misunderstandings, leading her to confront the difference between toying with matters of the heart and truly experiencing them. Meredith McDonough makes her OSF directorial debut with a bold, genre-bending romp that turns Austen on her head.

Emma is presented through special arrangement with and all authorized performance materials are supplied by TRW PLAYS, 1180 Avenue of the Americas, Suite 640, New York, NY 10036. www.trwplays.com

EDUCATION & ENGAGEMENT • CLASSES

Unfolding *A Raisin in the Sun*

April 10–April 12

Focused on Lorraine Hansberry's *A Raisin in the Sun*, spend a weekend with the Younger family as you learn about the first play by a Black woman to run on Broadway. Bringing together information about the playwright, the play, and OSF's production, this class will be an unmatched opportunity to engage with a true classic. Guests include cast members featured in OSF's production as well as creatives who brought this incredible show to life.

Expand your experience with optional performance and Preface tickets.

\$400 for class only; \$556 with tickets to *A Raisin in the Sun* and *A Midsummer Night's Dream*

Unruly Daughters: Women Characters in the 2026 Season

July 10–July 12

From precocious Emma to independent Katherine, women in the plays of OSF's 2026 season have something to say. Explore the gender dynamics at play in several shows: *Emma*, *The Taming of the Shrew*, *A Midsummer Night's Dream*, *Come From Away*, and *King Hedley II*. Consider the world these women inherited, the ways society and family shaped their choices, and ways they handle the options in front of them, some with acceptance and some with rebellion. From the hilarious to the heartbreaking, this class will challenge you to consider the women of OSF's 2026 season in a whole new light.

Expand your experience with optional performance and Preface tickets. *OSF recognizes the uncertainty of Southern Oregon's smoke season and has planned alternate activities should a smoke cancellation be necessary.*

\$400 for class only; \$556 with tickets to *Emma* and either *The Taming of the Shrew* or *A Midsummer Night's Dream*

Unfolding *Henry IV, Part One*

July 31–August 2

Hailed as the funniest of Shakespeare's histories, *Henry IV, Part One* gives us a world of conflicts: fathers and sons, loyalty and rebellion, privileged royals and bawdy taverns. Join us as this class dives into the political context of this play from a variety of perspectives—in Shakespeare's time, Henry's, and now. Joined by cast and creatives from OSF's production, this insightful and intensive class looks at the classic text while finding a place for it in the present. Led by the incomparable Rosa Joshi, this experience shouldn't be missed.

Expand your day with optional performance and Preface tickets. *OSF recognizes the uncertainty of Southern Oregon's smoke season and has planned alternate activities should a smoke cancellation be necessary.*

\$400 for class only; \$556 with tickets to *Henry IV, Part One* and *A Midsummer Night's Dream*

Art to Action Series

May 16, June 27, July 25, August 22, September 26

A new series from OSF's Education and Engagement team, this exciting collection of speakers, activities, community art making, and more links the work on our stages to the world around us. Events in this series are a great way to engage with topics in the 2026 season and will include community guests as well as renowned scholars. From learning more about issues that touch communities across the world to dancing with the whole family, we invite you to join and find new ways to put art into action.

Tickets: \$15 for adults, \$10 for 17 and under



OSF Director of Literary Development Paul Adolphsen and Associate Artistic Director Rosa Joshi teach a class. Photo by Stephen Kimbrell.

EXPERIENCE MORE WITH MEMBERSHIP

Elevate your experience in Ashland by accessing these VIP member benefits that allow you to go deeper and get to know OSF’s actors, artists, and company members. *(To see all of your benefits, please turn to the Member Benefits Chart on back cover.)*



Photo by Joe Sofranko.

MEMBERS' LOUNGE

Enjoy a relaxing drink, snack, book, or conversation before the show in our Gertrude Bowmer Members' Lounge, located just steps from the Angus Bowmer Theatre entrance. **Open to all members.** No reservation required.

Watch for our emails about our new “Leaders in the Lounge” series of conversations with OSF board members about important topics on our stages and in our community.

Scheduling Your Member Events

During Presale, you can now reserve your spot for the Member Events on these two pages by using the **season calendar** at osfashland.org.

- At any time, you can also visit the **Member Events page** under Menu > Support Us at osfashland.org.
- Have questions or want support as you make your plans? Contact OSF’s Membership & Development team at Membership@osfashland.org or 541-488-3880.

MEMBER BACKSTAGE TOURS

Members at the **Benefactor level (\$600+) and above** enjoy the most in-depth backstage experience offered at OSF. You will explore our theatres and campus with a collaborative team from Artistic, Education, and Production. Gain a unique behind-the-scenes perspective into the Festival’s creative and operational heart as this tour brings into focus the ways OSF’s members power the work onstage and beyond.

COFFEE CHATS

Members at the **Producer level (\$1,250+) and above** are invited to attend Coffee Chats **in person**. Join our hosts and a member of the OSF company (from actors to designers to leadership to alums) for an hour-long conversation in the Angus Bowmer Theatre lobby over a cup of coffee on selected Wednesdays and Saturdays. Hear about their journeys as artists and theatre-makers, their contributions in their field, and their current work at OSF.

See schedule on the calendar pages (13–20), and watch for our emails about upcoming guests.

To make these impactful conversations more accessible to members who can’t attend in person, we have shifted from virtual attendance to a recording of each chat. These **recordings** are available to **Benefactor Level (\$600+) and above**.

IMMERSIVE WEEKENDS

Where the connection becomes personal. As a Premier member—**Producer level (\$1,250) or above**—you are invited to these exclusive, multi-day events where you connect with the actors, artists, and company members who create the work you so generously support. You also enjoy exclusive seating, reserved before the season opens, for all performances. See the “Member Weekends” schedule on page 3.

SET CHANGEOVER EXPERIENCE

Come see the magic behind our repertory theatre as OSF's expert crews transform the stage from one production to another in just a few hours. This is a rare glimpse into the precision, teamwork, and artistry that makes OSF's repertory model possible. From scenery and props to lighting and sound, watch the productions change before your eyes. Don't just see the show—see the coordinated operation that keeps multiple plays running in rotation here at the Oregon Shakespeare Festival. Available to **Producer level (\$1,250) and above.**

PRODUCTION BUILDING TOURS

Join us in exploring the Oregon Shakespeare Festival's Production Building in Talent, Oregon! This creative hub features specialized areas of set construction, scenic painting, prop storage and construction, as well as OSF's very own Costume Rentals business. Each space is customized to support the incredible work of building OSF's productions. Just a short drive from Ashland, the Talent Production Building centralizes production work, making OSF's shows possible with incredible crafts, artistry, and care. Come take a behind-the-scenes look at where theatre dreams are built! Available to **Producer's Circle level (\$3,000) and above.**



ARTIST LUNCHEONS

Our special Artist Luncheons are an opportunity for you and a small group of members to connect personally with an OSF artist and learn more about the deep and far-reaching impact of your generosity. Each luncheon is carefully crafted to provide an intimate and memorable experience with a featured actor, designer, teaching artist, or artisan working at OSF. Luncheons are always on Fridays, with many dates available April through October. Available to **Producer's Circle level (\$3,000) and above.**

Need help deciding which Membership level is best for you?

Our team is here to help. Contact Membership at 541-488-3880 or Membership@osfashland.org.

OTHER MEMBERSHIP BENEFITS

Connecting you to the art you support. **Premier members (Producer level and above)** enjoy an enhanced level of service and benefits including:

- Advance access to A+ seating (Producer and above)
- Complimentary play tickets (Producer and above)
- Prominent recognition in our publications (Producer's Circle and above)
- Concierge ticket service (Chautauqua Guild and above)

EDUCATION & ENGAGEMENT • ALL SEASON

Make the most of your visit to OSF with these informative events that run all season, deepening your understanding of the plays you're seeing, the people who bring them to life, and the inner workings of OSF, onstage and off. Suitable for both newcomers and theatre aficionados, our education programs are a cornerstone of the OSF experience!

For dates and times, see the 2026 calendar on pages 13–20.

PREFACES

Take a peek inside each OSF production with a 30-minute Preface! These fun and interactive info sessions include a combination of insight into the play and playwright, historical context, and a glimpse into OSF's production approach.

\$15 per person.

POST-SHOW TALKBACKS

Hungry for more after the curtain goes down? Attend a Post-Show Talkback! Most of these bite-sized events highlight the incredible work of artists and technicians in our company. Others feature scholars, specialists, and local folks who work in fields connected to issues in our plays. Talkbacks begin 10 to 15 minutes after the end of a performance and last approximately 25 minutes. Each is different and free with your ticket to that performance! Don't miss out on these delightful chances to deepen your connection to the art, people, and ideas on our stages. Available on Friday afternoons in the Angus Bowmer Theatre and Saturday afternoons in the Thomas Theatre. See the calendar (pages 13–20) for dates and shows.

CAMPUS TOUR

Operated by the Tudor Guild, this one-hour guided tour provides a unique opportunity to understand the collaborative nature of theatre and learn about the rich history of the Oregon Shakespeare Festival—from past to present. The tour involves walking (about 3/4 of a mile) and stairs, but elevators are available at each stop to ensure accessibility. A great experience for visitors of all ages. **\$17 per person.**

BEHIND THE CURTAIN TOUR

Explore OSF's campus and engage your creative imagination in one epic tour! This one-hour event guides you through the offstage magic, highlighting the design and technical work that goes into our shows. With fresh displays and different tour routes every season, there's always something new to see and learn. Make it an even more memorable experience by bringing your students, classmates, friends, and family! **\$17 per person.**

SCHOOL VISIT PROGRAM

We are proud to continue this 40-year OSF legacy that introduces students to theatre and Shakespeare's plays in performance. This exciting visit includes live performances, talkbacks, and workshops that can take place in a school's theatre, auditorium, or gymnasium. We thank our members for making this powerful tradition a reality for students every fall!



MARCH 2026

Members get 10% off all seats, any date, all season long.

SUNDAY	MONDAY	TUESDAY	WEDNESDAY	THURSDAY	FRIDAY	SATURDAY
					MARCH 13 DREAM @ BMR 8:00	14 COME AWAY @ BMR 8:00
15 RAISIN @ BMR 8:00	N O N D R A Y S	17 Preface-Dream CARP 5:30 DREAM @ BMR 8:00	18 Behind Curtain Tour 9:30 Preface-Come Away CARP 5:30 COME AWAY @ BMR 8:00	19 Behind Curtain Tour 9:30 Preface-Raisin CARP 5:30 RAISIN @ BMR 8:00	20 Season Opening Weekend Panel Discussion 1 10:00 Behind Curtain Tour 9:30 Cocktail Reception 4:30 Preface-Dream CARP 5:30 DREAM @ BMR 8:00	21 Season Opening Weekend Panel Discussion 2 10:00 ADC Dinner 5:00 Preface-Come Away CARP 5:30 COME AWAY @ BMR 8:00
22 Season Opening Weekend Panel Discussion 3 10:00 Preface-Raisin CARP 12:00 RAISIN @ BMR 1:30		24 Preface-Raisin CARP 5:30 RAISIN BMR 8:00	25 Behind Curtain Tour 9:30 Preface-Come Away CARP 5:30 COME AWAY BMR 8:00	26 Behind Curtain Tour 9:30 Preface-Dream CARP 5:30 DREAM BMR 8:00	27 Behind Curtain Tour 9:30 Preface-Raisin CARP 5:30 RAISIN BMR 8:00	28 Preface-Come Away CARP 12:00 COME AWAY BMR 1:30 Preface-Dream CARP 5:30 DREAM BMR 8:00
29 RAISIN BMR 1:30	31 Preface-Dream NEW 5:30 DREAM BMR 8:00					

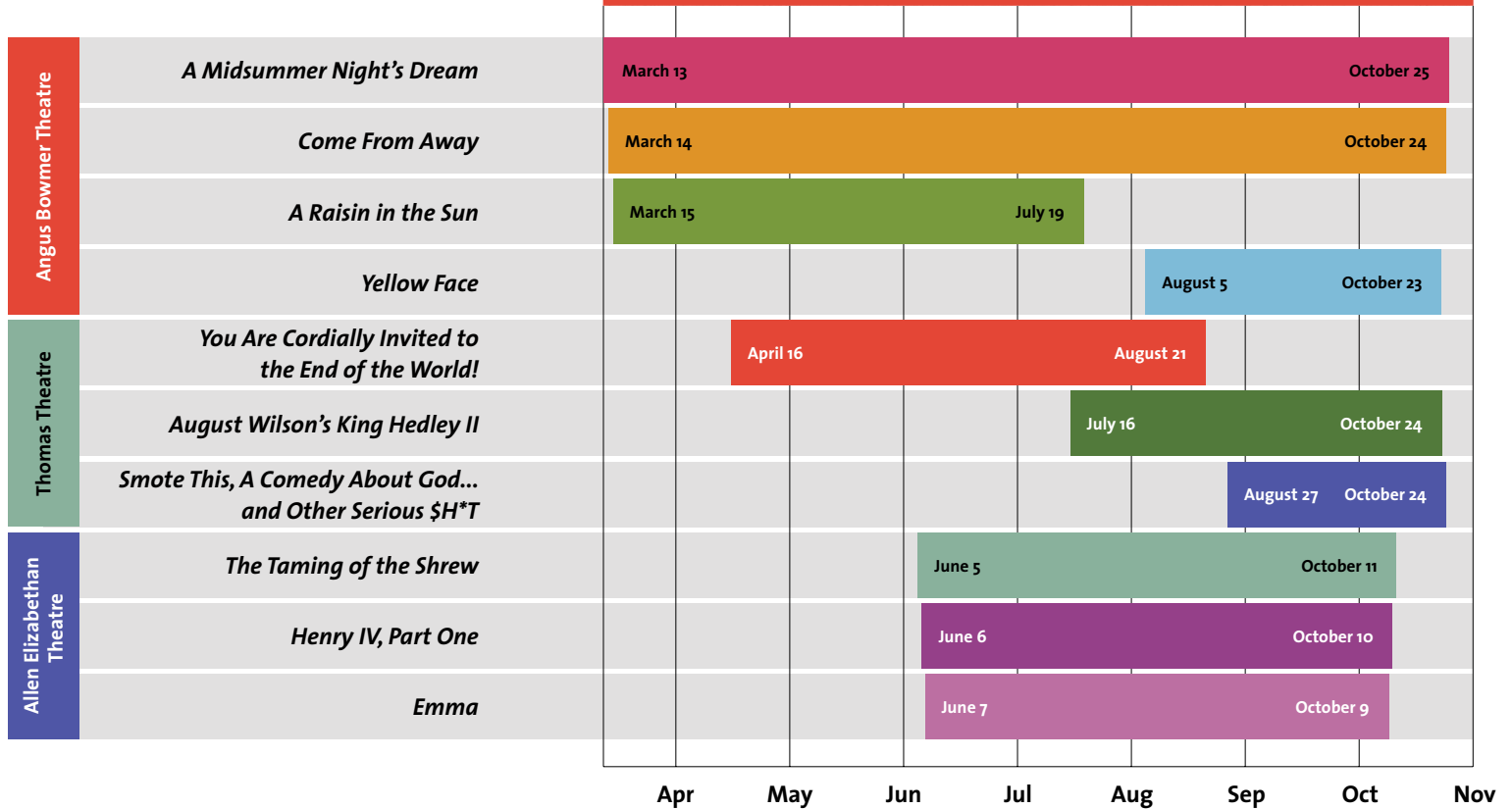
- **Season Opening Weekend events** (March 20–22, three discussions and a Cocktail Reception) are open to members at the **Producer level and above**.
- **ADC Dinner** (March 21) is open to members in the **Artistic Director's Circle and Century Circle levels**.
- **Previews** are performances just before the play officially opens, an important part of the artistic process. We love preview audiences!
- **Preface, Behind Curtain Tour, Talkback:** See page 12.

KEY

- previews
- opens
- BMR** Angus Bowmer Theatre
- THO** Thomas Theatre
- CARP** Carpenter Hall
- NEW** New Place

Oregon Shakespeare Festival.

2026 SEASON AT A GLANCE



SUNDAY	MONDAY	TUESDAY	WEDNESDAY	THURSDAY	FRIDAY	SATURDAY
			APRIL 1 Behind Curtain Tour 9:30 Preface-Raisin NEW 5:30 RAISIN BMR 8:00	2 Behind Curtain Tour 9:30 COME AWAY BMR 1:30 Preface-Dream NEW 5:30 DREAM BMR 8:00	3 Behind Curtain Tour 9:30 Production Building Tour 10:00 RAISIN BMR 1:30 Talkback-after Raisin BMR Preface-Come Away NEW 5:30 COME AWAY BMR 8:00	4 Preface-Dream NEW 12:00 DREAM BMR 1:30 Preface-Raisin NEW 5:30 RAISIN BMR 8:00
5 COME AWAY BMR 1:30	7 RAISIN BMR 1:30 Preface-Dream CARP 5:30 DREAM BMR 8:00	8 Behind Curtain Tour 9:30 Preface-Come Away CARP 12:00 COME AWAY BMR 1:30 Preface-Raisin CARP 5:30 RAISIN BMR 8:00	9 Behind Curtain Tour 9:30 DREAM BMR 1:30 Preface-Come Away CARP 5:30 COME AWAY BMR 8:00	10 Behind Curtain Tour 9:30 RAISIN BMR 1:30 Talkback-after Raisin BMR Set Changeover Exp 4:00 Preface-Dream CARP 5:30 DREAM BMR 8:00	11 Preface-Come Away CARP 12:00 COME AWAY BMR 1:30 Preface-Raisin CARP 5:30 RAISIN BMR 8:00	
12 DREAM BMR 1:30	14 COME AWAY BMR 1:30 Preface-Raisin CARP 5:30 RAISIN BMR 8:00	15 Behind Curtain Tour 9:30 Preface-Dream CARP 12:00 DREAM BMR 1:30 Preface-Come Away CARP 5:30 COME AWAY BMR 8:00	16 Spring Southampton Legacy Event Road to 100 Leadership Panel 10:00 Behind Curtain Tour 9:30 RAISIN BMR 1:30 CORDIALLY THO 1:30 Preface-Dream CARP 5:30 DREAM BMR 8:00	17 Spring Southampton Legacy Event Behind Curtain Tour 9:30 Artist Luncheon 11:30 COME AWAY BMR 1:30 Talkback-after Come Away BMR Set Changeover Exp 4:00 Preface-Raisin CARP 5:30 RAISIN BMR 8:00 CORDIALLY THO 8:00	18 Spring Southampton Legacy Event Coffee Chat 10:00 Preface-Cordially CARP 12:00 DREAM BMR 1:30 CORDIALLY THO 1:30 Preface-Come Away CARP 5:30 COME AWAY BMR 8:00	
19 RAISIN BMR 1:30	21 DREAM BMR 1:30 Preface-Come Away CARP 5:30 COME AWAY BMR 8:00	22 Behind Curtain Tour 9:30 Production Building Tour 10:00 Preface-Raisin CARP 12:00 RAISIN BMR 1:30 Preface-Dream CARP 5:30 DREAM BMR 8:00	23 Behind Curtain Tour 9:30 COME AWAY BMR 1:30 Preface-Raisin CARP 5:30 RAISIN BMR 8:00 CORDIALLY THO 8:00	24 Behind Curtain Tour 9:30 Campus Tour 10:30 Member Backstage Tour 10:30 DREAM BMR 1:30 CORDIALLY THO 1:30 Talkback-after Dream BMR Preface-Come Away CARP 5:30 COME AWAY BMR 8:00	25 Campus Tour 10:30 Preface-Cordially CARP 12:00 RAISIN BMR 1:30 CORDIALLY THO 1:30 Talkback-after Cordially THO Preface-Dream CARP 5:30 DREAM BMR 8:00 CORDIALLY THO 8:00	
26 COME AWAY BMR 1:30	28 RAISIN BMR 1:30 Preface-Come Away CARP 5:30 COME AWAY BMR 8:00	29 Behind Curtain Tour 9:30 Coffee Chat 10:00 Preface-Dream CARP 12:00 DREAM BMR 1:30 CORDIALLY THO 1:30 Preface-Raisin CARP 5:30 RAISIN BMR 8:00	30 Behind Curtain Tour 9:30 COME AWAY BMR 1:30 Preface-Cordially CARP 5:30 DREAM BMR 8:00 CORDIALLY THO 8:00			

NONPLAYS MONDAYS



Photo by Amy Miller.

MEMBERS GET 50% OFF RUSH TICKETS

Our popular **Rush Ticket program** is back—and even better, **members get 50% off** all Rush Tickets, all season! Limit 2 per customer, and **you must buy them in person.** Go to osfashland.org/rush for details.

- **Spring Southampton Legacy Event** takes place April 16–18. The Road to 100 Leadership Panel is open to members **Producer level and above** and Southampton Legacy Society members; the Southampton Artist Luncheon is open to **Producer's Circle level and above** and **Southampton Legacy Society** members.
- **Production Building Tour** is open to members at the Producers' Circle level and above. See page 11.
- **Set Changeover Experience** is open to members at the Producer level and above. See page 11.
- **Coffee Chats** are open in-person to members at the Producer level and above; members at the Benefactor level and above receive a video recording. See page 10.
- **Member Backstage Tour** is open to members at the Benefactor level and above. See page 10.
- **Artist Luncheons** are open to members at the Producers' Circle level and above. See page 11; locations TBD.
- **Previews** are performances just before the play officially opens, an important part of the artistic process. We love Preview audiences!
- **Preface, Campus Tour, Behind Curtain Tour, Talkback:** See page 12.

SUNDAY MONDAY TUESDAY WEDNESDAY THURSDAY FRIDAY SATURDAY

PLAY CONTENT & SUITABILITY

For more about the subject matter of any 2026 play, please view our suitability suggestions at osfashland.org/suitability after mid-November 2026 or contact the Box Office for details.

3
COME AWAY **BMR** 1:30
DREAM **BMR** 8:00

N
O
P
L
A
Y
S

5
RAISIN **BMR** 1:30
Preface-Come Away **CARP** 5:30
COME AWAY **BMR** 8:00

6
Behind Curtain Tour 9:30
Production Building Tour 10:00
Preface-Dream **CARP** 12:00
DREAM **BMR** 1:30
CORDIALLY **THO** 1:30
Preface-Raisin **CARP** 5:30
RAISIN **BMR** 8:00

7
Behind Curtain Tour 9:30
COME AWAY **BMR** 1:30
Preface-Cordially **CARP** 5:30
DREAM **BMR** 8:00
CORDIALLY **THO** 8:00

MAY 1
Behind Curtain Tour 9:30
Campus Tour 10:30
Member Backstage Tour 10:30
RAISIN **BMR** 1:30
CORDIALLY **THO** 1:30
Talkback-after Raisin **BMR**
Preface-Come Away **CARP** 5:30
COME AWAY **BMR** 8:00

2
Campus Tour 10:30
Preface-Dream **CARP** 12:00
DREAM **BMR** 1:30
CORDIALLY **THO** 1:30
Talkback-after Cordially **THO**
Preface-Raisin **CARP** 5:30
RAISIN **BMR** 8:00
CORDIALLY **THO** 8:00

10
COME AWAY **BMR** 1:30
RAISIN **BMR** 8:00

12
COME AWAY **BMR** 1:30
Preface-Dream **CARP** 5:30
DREAM **BMR** 8:00

13
Behind Curtain Tour 9:30
Preface-Raisin **CARP** 12:00
RAISIN **BMR** 1:30
CORDIALLY **THO** 1:30
Preface-Dream **CARP** 5:30
DREAM **BMR** 8:00

14
Behind Curtain Tour 9:30
DREAM **BMR** 1:30
CORDIALLY **THO** 1:30
Preface-Come Away **CARP** 5:30
COME AWAY **BMR** 8:00

15
Set Changeover Exp 9:00
Behind Curtain Tour 9:30
Campus Tour 10:30
RAISIN **BMR** 1:30
CORDIALLY **THO** 1:30
Talkback-after Raisin **BMR**
Preface-Come Away **CARP** 5:30
COME AWAY **BMR** 8:00

16
Coffee Chat 10:00
Campus Tour 10:30
COME AWAY **BMR** 1:30
Preface-Cordially **CARP** 5:30
RAISIN **BMR** 8:00
CORDIALLY **THO** 8:00

17
DREAM **BMR** 1:30
CORDIALLY **THO** 1:30
RAISIN **BMR** 8:00

O
N
M
O
N
D
A
Y
S

19
DREAM **BMR** 1:30
Preface-Cordially **NEW** 5:30
RAISIN **BMR** 8:00
CORDIALLY **THO** 8:00

20
Behind Curtain Tour 9:30
Preface-Come Away **NEW** 12:00
COME AWAY **BMR** 1:30
Preface-Raisin **NEW** 5:30
RAISIN **BMR** 8:00

21
Behind Curtain Tour 9:30
Production Building Tour 10:00
RAISIN **BMR** 1:30
Preface-Dream **CARP** 5:30
DREAM **BMR** 8:00
CORDIALLY **THO** 8:00

22
Behind Curtain Tour 9:30
Campus Tour 10:30
Artist Luncheon 11:30
COME AWAY **BMR** 1:30
Talkback-after Come Away **BMR**
Preface-Dream **CARP** 5:30
DREAM **BMR** 8:00
CORDIALLY **THO** 8:00

23
Campus Tour 10:30
Preface-Cordially **CARP** 12:00
DREAM **BMR** 1:30
CORDIALLY **THO** 1:30
Talkback-after Cordially **THO**
Preface-Come Away **CARP** 5:30
COME AWAY **BMR** 8:00

24
RAISIN **BMR** 1:30
CORDIALLY **THO** 1:30
COME AWAY **BMR** 8:00

26
RAISIN **BMR** 1:30
Preface-Cordially **CARP** 5:30
DREAM **BMR** 8:00
CORDIALLY **THO** 8:00

27
Behind Curtain Tour 9:30
Coffee Chat 10:00
Preface-Dream **CARP** 12:00
DREAM **BMR** 1:30
CORDIALLY **THO** 1:30
Preface-Come Away **CARP** 5:30
COME AWAY **BMR** 8:00

28
Behind Curtain Tour 9:30
COME AWAY **BMR** 1:30
Preface-Raisin **CARP** 5:30
RAISIN **BMR** 8:00

29
Behind Curtain Tour 9:30
Campus Tour 10:30
Member Backstage Tour 10:30
RAISIN **BMR** 1:30
CORDIALLY **THO** 1:30
Talkback-after Raisin **BMR**
Preface-Dream **CARP** 5:30
DREAM **BMR** 8:00
CORDIALLY **THO** 8:00

30
Campus Tour 10:30
Preface-Cordially **CARP** 12:00
DREAM **BMR** 1:30
CORDIALLY **THO** 1:30
Talkback-after Cordially **THO**
Preface-Come Away **CARP** 5:30
COME AWAY **BMR** 8:00

31
COME AWAY **BMR** 1:30
RAISIN **BMR** 8:00

KEY

- P** previews
- O** opens
- BMR** Angus Bowmer Theatre
- THO** Thomas Theatre
- CARP** Carpenter Hall
- NEW** New Place

BRASS RUBBING

Channel your inner artisan with the age-old process of Brass Rubbing, a medieval craft that even Shakespeare would love! This **hands-on experience** offers a fun and unique glimpse into the past and a **beautiful piece of artwork to take home**. In the summer months, Wednesday-Saturday, 10am-1pm, Bill Patton Garden (behind the Allen Elizabeth Theatre.)



Photo by Jenny Graham.

SUNDAY MONDAY TUESDAY WEDNESDAY THURSDAY FRIDAY SATURDAY

JUNE 2

COME AWAY BMR 1:30
 Preface-Dream CARP 5:30
DREAM BMR 8:00
CORDIALLY THO 8:00

3

Behind Curtain Tour 9:30
 Preface-Raisin CARP 12:00
RAISIN BMR 1:30
CORDIALLY THO 1:30
 Preface-Come Away CARP 5:30
COME AWAY BMR 8:00

4

Behind Curtain Tour 9:30
DREAM BMR 1:30
 Preface-Raisin CARP 5:30
RAISIN BMR 8:00

5

Behind Curtain Tour 9:30
 Production Building Tour 10:00
 Campus Tour 10:30
COME AWAY BMR 1:30
 Talkback-after Come Away BMR
 Preface-Shrew CARP 5:30
DREAM BMR 8:00
CORDIALLY THO 8:00
SHREW ALLEN 8:00

6

Campus Tour 10:30
 Preface-Cordially CARP 12:00
RAISIN BMR 1:30
CORDIALLY THO 1:30
 Talkback-after Cordially THO
 Preface-Henry CARP 5:30
COME AWAY BMR 8:00
HENRY IV: 1 ALLEN 8:00

N
O

7

DREAM BMR 1:30
CORDIALLY THO 1:30
RAISIN BMR 8:00
EMMA ALLEN 8:00

9

RAISIN BMR 1:30
 Preface-Dream CARP 5:30
DREAM BMR 8:00
CORDIALLY THO 8:00

10

Behind Curtain Tour 9:30
 Preface-Cordially CARP 12:00
DREAM BMR 1:30
CORDIALLY THO 1:30
 Preface-Come Away CARP 5:30
COME AWAY BMR 8:00

11

Behind Curtain Tour 9:30
COME AWAY BMR 1:30
 Set Changeover Exp 4:00
 Preface-Raisin CARP 5:30
RAISIN BMR 8:00
CORDIALLY THO 8:00

12

Behind Curtain Tour 9:30
 Campus Tour 10:30
RAISIN BMR 1:30
CORDIALLY THO 1:30
 Talkback-after Raisin BMR
 Preface-Shrew CARP 5:30
 Green Show GSS 6:30
DREAM BMR 8:00
SHREW ALLEN 8:00

13

Coffee Chat 10:00
 Campus Tour 10:30
 Preface-Dream CARP 12:00
DREAM BMR 1:30
CORDIALLY THO 1:30
 Talkback-after Cordially THO
 Preface-Henry CARP 5:30
 Green Show GSS 6:30
COME AWAY BMR 8:00
HENRY IV: 1 ALLEN 8:00

P
L
A
Y

14

COME AWAY BMR 1:30
RAISIN BMR 8:00
EMMA ALLEN 8:00

16

RAISIN BMR 1:30
CORDIALLY THO 1:30
 Preface-Dream NEW 5:30
 Green Show GSS 6:30
DREAM BMR 8:00

17

Behind Curtain Tour 9:30
 Preface-Cordially NEW 12:00
DREAM BMR 1:30
CORDIALLY THO 1:30
 Preface-Come Away NEW 5:30
 Green Show GSS 6:30
COME AWAY BMR 8:00

18

Behind Curtain Tour 9:30
 Member Backstage Tour 10:30
COME AWAY BMR 1:30
 Preface-Raisin CARP 5:30
 Green Show GSS 6:30
RAISIN BMR 8:00
CORDIALLY THO 8:00

19

Immersive Weekend I
 Panel Discussion 1 10:00
 Behind Curtain Tour 9:30
 Campus Tour 10:30
RAISIN BMR 1:30
CORDIALLY THO 1:30
 Talkback-after Raisin BMR
 Preface-Shrew CARP 5:30
 Green Show GSS 6:30
DREAM BMR 8:00
SHREW ALLEN 8:00

20

Immersive Weekend I
 Panel Discussion 2 10:00
 Campus Tour 10:30
 Preface-Dream NEW 12:00
DREAM BMR 1:30
CORDIALLY THO 1:30
 Talkback-after Cordially THO
 Wine Tasting Event 5:00
 Preface-Henry NEW 5:30
 Green Show GSS 6:30
COME AWAY BMR 8:00
HENRY IV: 1 ALLEN 8:00

S
O
N

21

Immersive Weekend I
 Panel Discussion 3 10:00
COME AWAY BMR 1:30
 Set Changeover Exp 4:00
 Preface-Emma NEW 5:30
RAISIN BMR 8:00
EMMA ALLEN 8:00

23

Preface-Emma CARP 5:30
 Green Show GSS 6:30
RAISIN BMR 8:00
CORDIALLY THO 8:00
EMMA ALLEN 8:00

24

Behind Curtain Tour 9:30
 Coffee Chat 10:00
 Preface-Cordially CARP 12:00
RAISIN BMR 1:30
CORDIALLY THO 1:30
 Preface-Dream CARP 5:30
 Green Show GSS 6:30
DREAM BMR 8:00
SHREW ALLEN 8:00

25

Behind Curtain Tour 9:30
 Preface-Henry CARP 5:30
 Green Show GSS 6:30
COME AWAY BMR 8:00
HENRY IV: 1 ALLEN 8:00

26

Set Changeover Exp 9:30
 Behind Curtain Tour 9:30
 Campus Tour 10:30
 Artist Luncheon 11:30
COME AWAY BMR 1:30
 Talkback-after Come Away BMR
 Preface-Raisin CARP 5:30
 Green Show GSS 6:30
RAISIN BMR 8:00
CORDIALLY THO 8:00
EMMA ALLEN 8:00

27

Campus Tour 10:30
 Preface-Cordially CARP 12:00
RAISIN BMR 1:30
CORDIALLY THO 1:30
 Talkback-after Cordially THO
 Preface-Shrew CARP 5:30
 Green Show GSS 6:30
DREAM BMR 8:00
SHREW ALLEN 8:00

M
O
N
D
A
Y

28

DREAM BMR 1:30
COME AWAY BMR 8:00
HENRY IV: 1 ALLEN 8:00

30

RAISIN BMR 1:30
CORDIALLY THO 1:30
 Preface-Come Away CARP 5:30
 Green Show GSS 6:30
COME AWAY BMR 8:00
HENRY IV: 1 ALLEN 8:00

S



Photo by Joe Sofranko.

ENJOY ALL OF YOUR INTERMISSION

Take advantage of our **pre-order concession services** in all of our theatres. **Place your order before the show** and have your beverages, sweets, and savories waiting for you at intermission.

- **Immersive Weekend I** events (June 19–21, three discussions and a Wine Tasting Event) are open to members at the **Producer level and above**.
- **Chautauqua Guild Weekend** takes place July 17–19. The Chautauqua Guild Dinner is open to **Chautauqua Guild level and above**; the three discussions are open to **Producer level and above**.
- **Set Changeover Experience** is open to members at the **Producer level and above**. See page 11.
- **Member Backstage Tour** is open to members at the **Benefactor level and above**. See page 10.
- **Artist Luncheons** are open to members at the **Producers' Circle level and above**. See page 11; locations TBD.
- **Production Building Tour** is open to members at the **Producers' Circle level and above**. See page 11.
- **Coffee Chats** are open in-person to members at the **Producer level and above**; members at the **Benefactor level and above** receive a video recording. See page 10.
- **Previews** are performances just before the play officially opens, an important part of the artistic process. We love Preview audiences!
- **Preface, Campus Tour, Behind Curtain Tour, Talkback:** See page 12.
- **Green Show:** Concerts on the Bricks. Free.

SUNDAY

MONDAY

TUESDAY

WEDNESDAY

THURSDAY

FRIDAY

SATURDAY

JULY 1

Behind Curtain Tour 9:30
Preface-Dream **CARP** 12:00
DREAM BMR 1:30
Preface-Emma **CARP** 5:30
Green Show **GSS** 6:30
RAISIN BMR 8:00
EMMA ALLEN 8:00

2

Behind Curtain Tour 9:30
COME AWAY BMR 1:30
Preface-Shrew **CARP** 5:30
Green Show **GSS** 6:30
DREAM BMR 8:00
CORDIALLY THO 8:00
SHREW ALLEN 8:00

3

Behind Curtain Tour 9:30
Production Building Tour 10:00
Campus Tour 10:30
RAISIN BMR 1:30
CORDIALLY THO 1:30
Talkback-after Raisin **BMR**
Preface-Henry **CARP** 5:30
Green Show **GSS** 6:30
COME AWAY BMR 8:00
HENRY IV:1 ALLEN 8:00

4

DREAM BMR 1:30
CORDIALLY THO 1:30
Green Show **GSS** 6:30
RAISIN BMR 8:00
EMMA ALLEN 8:00

5

COME AWAY BMR 1:30
DREAM BMR 8:00
SHREW ALLEN 8:00

N
O

7

RAISIN BMR 1:30
Preface-Dream **CARP** 5:30
Green Show **GSS** 6:30
DREAM BMR 8:00
SHREW ALLEN 8:00

8

Behind Curtain Tour 9:30
Coffee Chat 10:00
Preface-Come Away **CARP** 12:00
COME AWAY BMR 1:30
Preface-Emma **CARP** 5:30
Green Show **GSS** 6:30
RAISIN BMR 8:00
EMMA ALLEN 8:00

9

Behind Curtain Tour 9:30
DREAM BMR 1:30
Set Changeover Exp 4:00
Preface-Henry **CARP** 5:30
Green Show **GSS** 6:30
COME AWAY BMR 8:00
HENRY IV:1 ALLEN 8:00

10

Behind Curtain Tour 9:30
Campus Tour 10:30
RAISIN BMR 1:30
Talkback-after Raisin **BMR**
Preface-Shrew **CARP** 5:30
Green Show **GSS** 6:30
DREAM BMR 8:00
SHREW ALLEN 8:00

11

Campus Tour 10:30
Preface-Come Away **CARP** 12:00
COME AWAY BMR 1:30
Preface-Raisin **CARP** 5:30
Green Show **GSS** 6:30
RAISIN BMR 8:00
CORDIALLY THO 8:00
EMMA ALLEN 8:00

12

DREAM BMR 1:30
CORDIALLY THO 1:30
COME AWAY BMR 8:00
HENRY IV:1 ALLEN 8:00

P
L
A
Y
S

14

DREAM BMR 1:30
Preface-Raisin **CARP** 5:30
Green Show **GSS** 6:30
RAISIN BMR 8:00
CORDIALLY THO 8:00
EMMA ALLEN 8:00

15

Behind Curtain Tour 9:30
Preface-Cordially **CARP** 12:00
RAISIN BMR 1:30
CORDIALLY THO 1:30
Preface-Henry **CARP** 5:30
Green Show **GSS** 6:30
COME AWAY BMR 8:00
HENRY IV:1 ALLEN 8:00

16

Behind Curtain Tour 9:30
Member Backstage Tour 10:30
COME AWAY BMR 1:30
HEDLEY THO 1:30
Preface-Shrew **CARP** 5:30
Green Show **GSS** 6:30
DREAM BMR 8:00
SHREW ALLEN 8:00

17

Chautauqua Guild Weekend
Panel Discussion 1 10:00
Behind Curtain Tour 9:30
Campus Tour 10:30
COME AWAY BMR 1:30
HEDLEY THO 1:30
Talkback-after Come Away **BMR**
Preface-Emma **CARP** 5:30
Green Show **GSS** 6:30
RAISIN BMR 8:00
CORDIALLY THO 8:00
EMMA ALLEN 8:00

18

Chautauqua Guild Weekend
Panel Discussion 2 10:00
Campus Tour 10:30
Preface-Dream **CARP** 12:00
DREAM BMR 1:30
CORDIALLY THO 1:30
Talkback-after Cordially **THO**
Chautauqua Guild Dinner 5:00
Preface-Hedley **CARP** 5:30
Green Show **GSS** 6:30
COME AWAY BMR 8:00
HEDLEY THO 8:00
HENRY IV:1 ALLEN 8:00

19

Chautauqua Guild Weekend
Panel Discussion 3 10:00
RAISIN BMR 1:30
DREAM BMR 8:00
SHREW ALLEN 8:00

O
N

21

Preface-Henry **CARP** 5:30
Green Show **GSS** 6:30
HENRY IV:1 ALLEN 8:00

22

Behind Curtain Tour 9:30
Member Backstage Tour 10:30
Preface-Come Away **CARP** 12:00
COME AWAY BMR 1:30
Preface-Shrew **CARP** 5:30
Green Show **GSS** 6:30
DREAM BMR 8:00
SHREW ALLEN 8:00

23

Behind Curtain Tour 9:30
COME AWAY BMR 1:30
HEDLEY THO 1:30
Preface-Emma **CARP** 5:30
Green Show **GSS** 6:30
CORDIALLY THO 8:00
EMMA ALLEN 8:00

24

Behind Curtain Tour 9:30
Campus Tour 10:30
Artist Luncheon 11:30
DREAM BMR 1:30
CORDIALLY THO 1:30
Talkback-after Dream **BMR**
Preface-Henry **CARP** 5:30
Green Show **GSS** 6:30
COME AWAY BMR 8:00
HEDLEY THO 8:00
HENRY IV:1 ALLEN 8:00

25

Coffee Chat 10:00
Campus Tour 10:30
Preface-Cordially **CARP** 12:00
CORDIALLY THO 1:30
Talkback-after Cordially **THO**
Preface-Hedley **CARP** 5:30
Green Show **GSS** 6:30
HEDLEY THO 8:00
SHREW ALLEN 8:00

26

HEDLEY THO 1:30
EMMA ALLEN 8:00

M
O
N
D
A
Y

28

CORDIALLY THO 1:30
Preface-Shrew **CARP** 5:30
Green Show **GSS** 6:30
SHREW ALLEN 8:00

29

Set Changeover Exp 9:00
Behind Curtain Tour 9:30
Preface-Hedley **CARP** 12:00
HEDLEY THO 1:30
Preface-Henry **CARP** 5:30
Green Show **GSS** 6:30
HEDLEY THO 8:00
HENRY IV:1 ALLEN 8:00

30




Behind Curtain Tour 9:30
Production Building Tour 10:00
CORDIALLY THO 1:30
Preface-Emma **CARP** 5:30
Green Show **GSS** 6:30
EMMA ALLEN 8:00

31

Behind Curtain Tour 9:30
Campus Tour 10:30
HEDLEY THO 1:30
Preface-Dream **CARP** 5:30
Green Show **GSS** 6:30
DREAM BMR 8:00
CORDIALLY THO 8:00
SHREW ALLEN 8:00

S

KEY

-  previews
-  opens
-  closes
- BMR** Angus Bowmer Theatre
- THO** Thomas Theatre
- ALLEN** Allen Elizabethan Theatre
- GSS** Green Show Stage
- CARP** Carpenter Hall
- NEW** New Place

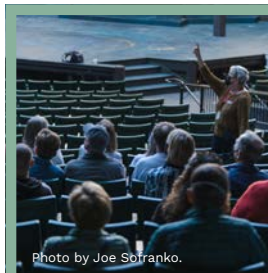


Photo by Joe Sotranko.

SEE HOW IT'S DONE WITH OUR UNIQUE TOURS

Learn how the art makes it from the page to the stage with our always-popular **Campus Tours** on Fridays and Saturdays, in-depth **Behind the Curtain** tours Wednesday through Friday, and our **NEW Member Backstage Tours** on select dates. See pages 10 & 12.

SUNDAY

MONDAY

TUESDAY

WEDNESDAY

THURSDAY

FRIDAY

SATURDAY



MEMBERS GET 10% OFF ON ALL OSF LOGO ITEMS AT THE GIFT SHOP

No trip to OSF is complete without a stop in our friendly shop at the corner of Main and Pioneer!

AUGUST 1

Campus Tour 10:30
 Preface-Cordially CARP 12:00
DREAM BMR 1:30
CORDIALLY THO 1:30
 Talkback-after Cordially **THO**
 Preface-Henry CARP 5:30
 Green Show **GSS** 6:30
COME AWAY BMR 8:00
HEDLEY THO 8:00
HENRY IV:1 ALLEN 8:00

2
HEDLEY THO 1:30
EMMA ALLEN 8:00

N
O
P
L

4
HEDLEY THO 1:30
 Preface-Emma CARP 5:30
 Green Show **GSS** 6:30
EMMA ALLEN 8:00

5
 Behind Curtain Tour 9:30
 Preface-Cordially CARP 12:00
CORDIALLY THO 1:30
 Preface-Shrew CARP 5:30
 Green Show **GSS** 6:30
YELLOW **BMR** 8:00
CORDIALLY THO 8:00
SHREW ALLEN 8:00

6
 Behind Curtain Tour 9:30
HEDLEY THO 1:30
 Preface-Henry CARP 5:30
 Green Show **GSS** 6:30
COME AWAY BMR 8:00
HEDLEY THO 8:00
HENRY IV:1 ALLEN 8:00

7
Immersive Weekend II
 Panel Discussion 1 10:00
 Behind Curtain Tour 9:30
 Campus Tour 10:30
DREAM BMR 1:30
 Talkback-after Dream **BMR**
 Preface-Emma CARP 5:30
Curated Evening Event 4:30
 Green Show **GSS** 6:30
YELLOW **BMR** 8:00
CORDIALLY THO 8:00
EMMA ALLEN 8:00

8
Immersive Weekend II
 Panel Discussion 2 10:00
 Campus Tour 10:30
 Preface-Hedley CARP 12:00
HEDLEY THO 1:30
 Talkback-after Cordially **THO**
 Preface-Dream CARP 5:30
 Green Show **GSS** 6:30
DREAM BMR 8:00
CORDIALLY THO 8:00
SHREW ALLEN 8:00

9
Immersive Weekend II
 Panel Discussion 3 10:00
 Preface-Yellow CARP 12:00
YELLOW **BMR** 1:30
HEDLEY THO 1:30
COME AWAY BMR 8:00
HENRY IV:1 ALLEN 8:00

A
Y
S
O

11
DREAM BMR 1:30
 Preface-Henry NEW 5:30
 Green Show **GSS** 6:30
COME AWAY BMR 8:00
HENRY IV:1 ALLEN 8:00

12
 Behind Curtain Tour 9:30
 Coffee Chat 10:00
 Preface-Hedley NEW 12:00
HEDLEY THO 1:30
 Preface-Yellow NEW 5:30
 Green Show **GSS** 6:30
YELLOW BMR 8:00
CORDIALLY THO 8:00
EMMA ALLEN 8:00

13
 Behind Curtain Tour 9:30
COME AWAY BMR 1:30
HEDLEY THO 1:30
 Preface-Shrew CARP 5:30
 Green Show **GSS** 6:30
DREAM BMR 8:00
SHREW ALLEN 8:00

14
 Behind Curtain Tour 9:30
 Campus Tour 10:30
Member Backstage Tour 10:30
YELLOW BMR 1:30
CORDIALLY THO 1:30
 Talkback-after Yellow **BMR**
 Preface-Henry CARP 5:30
 Green Show **GSS** 6:30
COME AWAY BMR 8:00
HEDLEY THO 8:00
HENRY IV:1 ALLEN 8:00

15
 Campus Tour 10:30
 Preface-Dream CARP 12:00
DREAM BMR 1:30
CORDIALLY THO 1:30
 Talkback-after Cordially **THO**
 Preface-Emma CARP 5:30
 Green Show **GSS** 6:30
YELLOW BMR 8:00
CORDIALLY THO 8:00
EMMA ALLEN 8:00

16
COME AWAY BMR 1:30
HEDLEY THO 1:30
DREAM BMR 8:00
SHREW ALLEN 8:00

O
N
M
O
N

18
YELLOW BMR 1:30
CORDIALLY THO 1:30
 Preface-Dream CARP 5:30
 Green Show **GSS** 6:30
DREAM BMR 8:00
SHREW ALLEN 8:00

19
 Behind Curtain Tour 9:30
 Preface-Come Away CARP 12:00
COME AWAY BMR 1:30
HEDLEY THO 1:30
 Preface-Yellow CARP 5:30
 Green Show **GSS** 6:30
YELLOW BMR 8:00
EMMA ALLEN 8:00

20
Set Changeover Exp 9:00
 Behind Curtain Tour 9:30
DREAM BMR 1:30
CORDIALLY THO 1:30
 Preface-Henry CARP 5:30
 Green Show **GSS** 6:30
COME AWAY BMR 8:00
HENRY IV:1 ALLEN 8:00

21
 Behind Curtain Tour 9:30
 Campus Tour 10:30
Artist Luncheon 11:30
YELLOW BMR 1:30
HEDLEY THO 1:30
 Talkback-after Yellow **BMR**
 Preface-Shrew CARP 5:30
 Green Show **GSS** 6:30
DREAM BMR 8:00
CORDIALLY THO 8:00
SHREW ALLEN 8:00

22
 Campus Tour 10:30
 Preface-Hedley CARP 12:00
COME AWAY BMR 1:30
HEDLEY THO 1:30
 Talkback-after Hedley **THO**
 Preface-Emma CARP 5:30
 Green Show **GSS** 6:30
YELLOW BMR 8:00
EMMA ALLEN 8:00

23
DREAM BMR 1:30
COME AWAY BMR 8:00
HENRY IV:1 ALLEN 8:00

N
D
A
Y
S

25
COME AWAY BMR 1:30
 Preface-Yellow CARP 5:30
 Green Show **GSS** 6:30
YELLOW BMR 8:00
EMMA ALLEN 8:00

26
 Behind Curtain Tour 9:30
 Production Building Tour 10:00
 Preface-Dream CARP 12:00
DREAM BMR 1:30
 Preface-Henry CARP 5:30
 Green Show **GSS** 6:30
COME AWAY BMR 8:00
HEDLEY THO 8:00
HENRY IV:1 ALLEN 8:00

27
 Behind Curtain Tour 9:30
YELLOW BMR 1:30
 Preface-Shrew CARP 5:30
 Green Show **GSS** 6:30
DREAM BMR 8:00
SMOTE THIS THO 8:00
SHREW ALLEN 8:00

28
 Behind Curtain Tour 9:30
 Campus Tour 10:30
Member Backstage Tour 10:30
COME AWAY BMR 1:30
HEDLEY THO 1:30
 Talkback-after Come Away **BMR**
 Preface-Emma CARP 5:30
 Green Show **GSS** 6:30
YELLOW BMR 8:00
SMOTE THIS THO 8:00
EMMA ALLEN 8:00

29
Coffee Chat 10:00
 Campus Tour 10:30
 Preface-Dream CARP 12:00
DREAM BMR 1:30
SMOTE THIS THO 1:30
 Preface-Come Away CARP 5:30
 Green Show **GSS** 6:30
COME AWAY BMR 8:00
HEDLEY THO 8:00
HENRY IV:1 ALLEN 8:00

30
YELLOW BMR 1:30
SMOTE THIS THO 1:30
DREAM BMR 8:00
SHREW ALLEN 8:00

- **Immersive Weekend II** events (August 7–9, three discussions and a Curated Evening Event) are open to members at the **Producer level and above**.
- **Fall Southampton Legacy Event** takes place September 25–27. The

three panel discussions are open to members **Producer level and above** and Southampton members; the Southampton Dinner is open to **Southampton Legacy Society members**.

- **Production Building Tour** is open to members at the **Producers' Circle level and above**. See page 11.

- **Coffee Chats** are open in-person to members at the **Producer level and above**; members at the **Benefactor level and above** receive a video recording. See page 10.

- **Set Changeover Experience** is open to members at the **Producer level and above**. See page 11.

- **Member Backstage Tour** is open to members at the **Benefactor level and above**. See page 10.

- **Artist Luncheons** are open to members at the **Producers' Circle level and above**. See page 11; locations TBD.

- **Previews** are performances just

before the play officially opens, an important part of the artistic process. We love Preview audiences!

- **Preface, Campus Tour, Behind Curtain Tour, Talkback:** See page 12.

- **Green Show:** Concerts on the Bricks. Free.

SEPTEMBER 2026

Members get 10% off all seats, any date, all season long.

SUNDAY

MONDAY

TUESDAY

WEDNESDAY

THURSDAY

FRIDAY

SATURDAY

SEPTEMBER 1 2

DREAM BMR 1:30
Preface-Henry **CARP** 5:30
Green Show **GSS** 6:30
COME AWAY BMR 8:00
HENRY IV:1 ALLEN 8:00

Behind Curtain Tour 9:30
Preface-Yellow **CARP** 12:00
YELLOW BMR 1:30
SMOTE THIS THO 1:30
Preface-Shrew **CARP** 5:30
Green Show **GSS** 6:30
DREAM BMR 8:00
HEDLEY THO 8:00
SHREW ALLEN 8:00

3
Behind Curtain Tour 9:30
COME AWAY BMR 1:30
HEDLEY THO 1:30
Preface-Emma **CARP** 5:30
Green Show **GSS** 6:30
YELLOW BMR 8:00
EMMA ALLEN 8:00

4
Behind Curtain Tour 9:30
Production Building Tour 10:00
Campus Tour 10:30
DREAM BMR 1:30
SMOTE THIS THO 1:30
Talkback-after Dream **BMR**
Preface-Hedley **CARP** 5:30
Green Show **GSS** 6:30
COME AWAY BMR 8:00
HEDLEY THO 8:00
HENRY IV:1 ALLEN 8:00

5
Campus Tour 10:30
Preface-Yellow **CARP** 12:00
YELLOW BMR 1:30
SMOTE THIS THO 1:30
Talkback-after Smote **THO**
Preface-Dream **CARP** 5:30
Green Show **GSS** 6:30
DREAM BMR 8:00
SMOTE THIS THO 8:00
SHREW ALLEN 8:00

N
O

6
COME AWAY BMR 1:30
HEDLEY THO 1:30
YELLOW BMR 8:00
SMOTE THIS THO 8:00
EMMA ALLEN 8:00

8
YELLOW BMR 1:30
SMOTE THIS THO 1:30
Preface-Shrew **CARP** 5:30
Green Show **GSS** 6:30
DREAM BMR 8:00
SHREW ALLEN 8:00

9
Behind Curtain Tour 9:30
Preface-Dream **CARP** 12:00
DREAM BMR 1:30
SMOTE THIS THO 1:30
Preface-Henry **CARP** 5:30
Green Show **GSS** 6:30
COME AWAY BMR 8:00
HEDLEY THO 8:00
HENRY IV:1 ALLEN 8:00

10
Behind Curtain Tour 9:30
COME AWAY BMR 1:30
HEDLEY THO 1:30
Preface-Emma **CARP** 5:30
Green Show **GSS** 6:30
YELLOW BMR 8:00
SMOTE THIS THO 8:00
EMMA ALLEN 8:00

11
Behind Curtain Tour 9:30
Campus Tour 10:30
Artist Luncheon 11:30
COME AWAY BMR 1:30
HEDLEY THO 1:30
Talkback-after Come Away **BMR**
Set Changeover Exp 4:00
Preface-Shrew **CARP** 5:30
Green Show **GSS** 6:30
DREAM BMR 8:00
SMOTE THIS THO 8:00
SHREW ALLEN 8:00

12
Campus Tour 10:30
Preface-Yellow **CARP** 12:00
YELLOW BMR 1:30
SMOTE THIS THO 1:30
Talkback-after Hedley **THO**
Preface-Henry **CARP** 5:30
Green Show **GSS** 6:30
COME AWAY BMR 8:00
HEDLEY THO 8:00
HENRY IV:1 ALLEN 8:00

P
L
A
Y
S

13
DREAM BMR 1:30
SMOTE THIS THO 1:30
YELLOW BMR 8:00
EMMA ALLEN 8:00

15
DREAM BMR 1:30
SMOTE THIS THO 1:30
Preface-Yellow **CARP** 5:30
Green Show **GSS** 6:30
YELLOW BMR 8:00
EMMA ALLEN 8:00

16
Behind Curtain Tour 9:30
Coffee Chat 10:00
Preface-Hedley **CARP** 12:00
COME AWAY BMR 1:30
HEDLEY THO 1:30
Preface-Shrew **CARP** 5:30
Green Show **GSS** 6:30
DREAM BMR 8:00
HEDLEY THO 8:00
SHREW ALLEN 8:00

17
Behind Curtain Tour 9:30
YELLOW BMR 1:30
SMOTE THIS THO 1:30
Preface-Henry **CARP** 5:30
Green Show **GSS** 6:30
COME AWAY BMR 8:00
HEDLEY THO 8:00
HENRY IV:1 ALLEN 8:00

18
Set Changeover Exp 9:00
Behind Curtain Tour 9:30
Campus Tour 10:30
DREAM BMR 1:30
SMOTE THIS THO 1:30
Talkback-after Dream **BMR**
Preface-Emma **CARP** 5:30
Green Show **GSS** 6:30
YELLOW BMR 8:00
SMOTE THIS THO 8:00
EMMA ALLEN 8:00

19
Campus Tour 10:30
Preface-Come Away **CARP** 12:00
COME AWAY BMR 1:30
HEDLEY THO 1:30
Talkback-after Hedley **THO**
Preface-Dream **CARP** 5:30
Green Show **GSS** 6:30
DREAM BMR 8:00
SMOTE THIS THO 8:00
SHREW ALLEN 8:00

O
N

20
YELLOW BMR 1:30
SMOTE THIS THO 1:30
COME AWAY BMR 8:00
HENRY IV:1 ALLEN 8:00

22
YELLOW BMR 1:30
Preface-Henry **CARP** 5:30
Green Show **GSS** 6:30
COME AWAY BMR 8:00
HEDLEY THO 8:00
HENRY IV:1 ALLEN 8:00

23
Behind Curtain Tour 9:30
Preface-Dream **CARP** 12:00
DREAM BMR 1:30
SMOTE THIS THO 1:30
Preface-Yellow **CARP** 5:30
Green Show **GSS** 6:30
YELLOW BMR 8:00
EMMA ALLEN 8:00

24
Behind Curtain Tour 9:30
Member Backstage Tour 10:30
COME AWAY BMR 1:30
HEDLEY THO 1:30
Preface-Shrew **CARP** 5:30
Green Show **GSS** 6:30
DREAM BMR 8:00
SMOTE THIS THO 8:00
SHREW ALLEN 8:00

25
Fall Southampton Legacy Event
Panel Discussion 1 10:00
Behind Curtain Tour 9:30
Campus Tour 10:30
YELLOW BMR 1:30
SMOTE THIS THO 1:30
Talkback-after Yellow **BMR**
Southampton Dinner 5:00
Preface-Henry **CARP** 5:30
Green Show **GSS** 6:30
COME AWAY BMR 8:00
HEDLEY THO 8:00
HENRY IV:1 ALLEN 8:00

26
Fall Southampton Legacy Event
Panel Discussion 2 10:00
Campus Tour 10:30
Preface-Dream **CARP** 12:00
DREAM BMR 1:30
SMOTE THIS THO 1:30
Set Changeover Exp 4:00
Preface-Emma **CARP** 5:30
Green Show **GSS** 6:30
YELLOW BMR 8:00
SMOTE THIS THO 8:00
EMMA ALLEN 8:00

M
O
N
D
A
Y

27
Fall Southampton Legacy Event
Panel Discussion 3 10:00
COME AWAY BMR 1:30
HEDLEY THO 1:30
DREAM BMR 8:00
SMOTE THIS THO 8:00
SHREW ALLEN 8:00

29
COME AWAY BMR 1:30
HEDLEY THO 1:30
Preface-Shrew **CARP** 5:30
DREAM BMR 8:00
SHREW ALLEN 8:00

30
Behind Curtain Tour 9:30
Coffee Chat 10:00
Preface-Dream **CARP** 12:00
DREAM BMR 1:30
SMOTE THIS THO 1:30
Preface-Yellow **CARP** 5:30
YELLOW BMR 8:00
EMMA ALLEN 8:00

S

KEY

- P** previews
- O** opens
- C** closes
- BMR** Angus Bowmer Theatre
- THO** Thomas Theatre
- GSS** Green Show Stage
- CARP** Carpenter Hall
- NEW** New Place

SOUTHAMPTON LEGACY SOCIETY

At OSF we believe that the future is shaped by those who care enough to create it. By including us in your estate plans, you can play a vital role in supporting the transformative power of theatre. Contact Development@osfashland.org to learn more.



Photo by Joe Soffranko

GREEN SHOW

Our popular **free evening concert series** returns to the Courtyard Stage in 2026! Visit osfashland.org/greenshow in late spring 2026 for the lineup. Concerts run **June 12 - September 26, Tuesday through Saturday, 6:30pm.**

SUNDAY MONDAY TUESDAY WEDNESDAY THURSDAY FRIDAY SATURDAY

4
DREAM BMR 1:30
SMOTE THIS THO 1:30
COME AWAY BMR 8:00
HENRY IV:1 ALLEN 8:00

11
YELLOW BMR 1:30
SMOTE THIS THO 1:30
DREAM BMR 8:00
SHREW ALLEN 8:00

18
DREAM BMR 1:30
SMOTE THIS THO 1:30
YELLOW BMR 8:00

25
DREAM ALLEN BMR 1:30

N
O
P
L
A
Y
S
O
N
M
O
N
D
A
Y
S

6
Preface-Yellow CARP 5:30
YELLOW BMR 8:00
EMMA ALLEN 8:00

13
COME AWAY BMR 1:30
HEDLEY THO 1:30
Preface-Dream CARP 5:30
DREAM BMR 8:00

20
YELLOW BMR 1:30
SMOTE THIS THO 1:30
Preface-Come Away CARP 5:30
COME AWAY BMR 8:00

7
Behind Curtain Tour 9:30
Preface-Dream CARP 12:00
DREAM BMR 1:30
SMOTE THIS THO 1:30
Preface-Hedley CARP 5:30
COME AWAY BMR 8:00
HEDLEY THO 8:00
HENRY IV:1 ALLEN 8:00

14
Behind Curtain Tour 9:30
Preface-Yellow CARP 12:00
YELLOW BMR 1:30
SMOTE THIS THO 1:30
Preface-Come Away CARP 5:30
COME AWAY BMR 8:00

21
Behind Curtain Tour 9:30
Coffee Chat 10:00
Preface-Dream CARP 12:00
DREAM BMR 1:30
SMOTE THIS THO 1:30
Preface-Yellow CARP 5:30
YELLOW BMR 8:00

OCTOBER 1
Behind Curtain Tour 9:30
YELLOW BMR 1:30
HEDLEY THO 1:30
Preface-Hedley CARP 5:30
COME AWAY BMR 8:00
HEDLEY THO 8:00
HENRY IV:1 ALLEN 8:00

8
Behind Curtain Tour 9:30
YELLOW BMR 1:30
SMOTE THIS THO 1:30
Preface-Shrew CARP 5:30
DREAM BMR 8:00
SHREW ALLEN 8:00

15
Behind Curtain Tour 9:30
Member Backstage Tour 10:30
DREAM BMR 1:30
SMOTE THIS THO 1:30
Preface-Yellow CARP 5:30
YELLOW BMR 8:00

22
Behind Curtain Tour 9:30
COME AWAY BMR 1:30
HEDLEY THO 1:30
Preface-Dream CARP 5:30
DREAM BMR 8:00

2
Behind Curtain Tour 9:30
Production Building Tour 10:00
YELLOW BMR 1:30
SMOTE THIS THO 1:30
Talkback-after Yellow BMR
Preface-Shrew CARP 5:30
DREAM BMR 8:00
SMOTE THIS THO 8:00
SHREW ALLEN 8:00

9
Behind Curtain Tour 9:30
Member Backstage Tour 10:30
COME AWAY BMR 1:30
HEDLEY THO 1:30
Talkback-after Come Away BMR
Preface-Emma CARP 5:30
YELLOW BMR 8:00
SMOTE THIS THO 8:00
EMMA ALLEN 8:00

16
Behind Curtain Tour 9:30
COME AWAY BMR 1:30
HEDLEY THO 1:30
Talkback-after Come Away BMR
Set Changeover Exp 4:00
Preface-Dream CARP 5:30
DREAM BMR 8:00
SMOTE THIS THO 8:00

23
Behind Curtain Tour 9:30
Artist Luncheon 11:30
COME AWAY BMR 1:30
HEDLEY THO 1:30
Talkback-after Come Away BMR
Preface-Yellow CARP 5:30
YELLOW ALLEN BMR 8:00
SMOTE THIS THO 8:00

3
Preface-Come Away CARP 12:00
COME AWAY BMR 1:30
HEDLEY THO 1:30
Talkback-after Hedley THO
Preface-Emma CARP 5:30
YELLOW BMR 8:00
SMOTE THIS THO 8:00
EMMA ALLEN 8:00

10
Coffee Chat 10:00
Preface-Dream CARP 12:00
DREAM BMR 1:30
SMOTE THIS THO 1:30
Talkback-after Smote THO
Preface-Henry CARP 5:30
YELLOW BMR 8:00
HEDLEY THO 8:00
HENRY IV:1 ALLEN 8:00

17
YELLOW BMR 1:30
SMOTE THIS THO 1:30
Talkback-after Smote THO
Preface-Hedley CARP 5:30
COME AWAY BMR 8:00
HEDLEY THO 8:00

24
SMOTE THIS THO 1:30
Talkback-after Smote THO
Preface-Hedley CARP 5:30
COME AWAY BMR 8:00
HEDLEY THO 8:00

KEY	
Ⓢ	closes
BMR	Angus Bowmer Theatre
THO	Thomas Theatre
ALLEN	Allen Elizabethan Theatre
CARP	Carpenter Hall



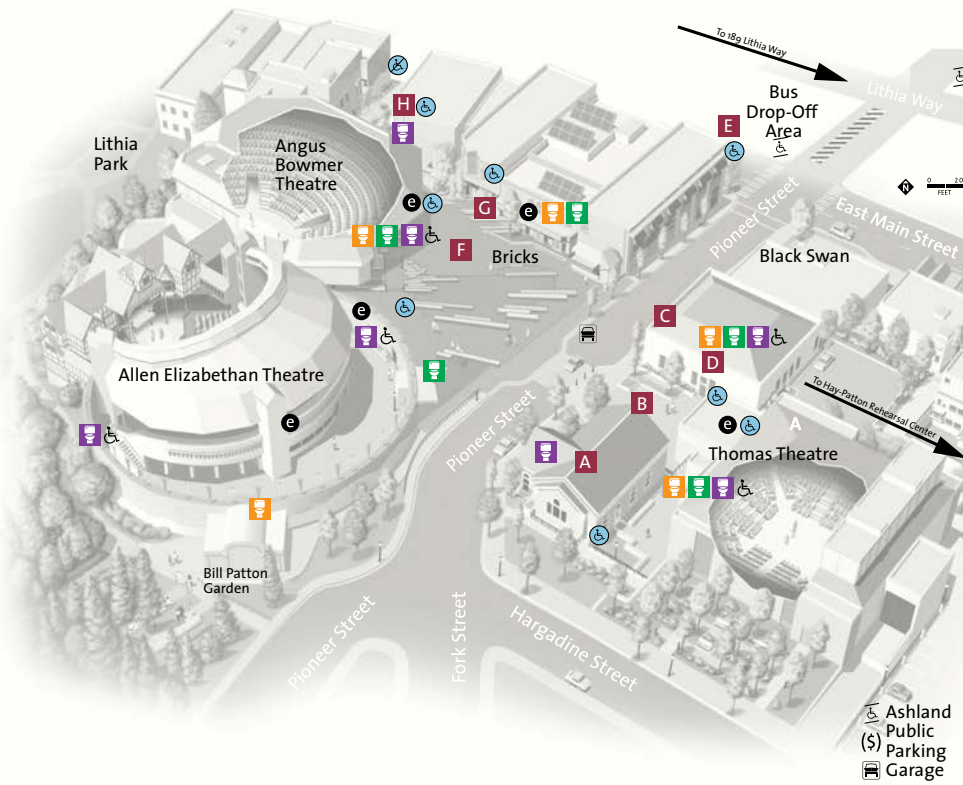
Photo by Joe Sofranko.

COLD? HERE'S A COOL IDEA.

On chilly nights in our outdoor Allen Elizabeth Theatre, rent a handmade pillow or fleece blanket to keep you warm and cozy throughout the show. Just visit the Soroptimists' counter (near the Access Booth in the concessions area) and know that your rental supports local education for women and girls.

- **Production Building Tour** is open to members at the Producers' Circle level and above. See page 11.
- **Set Changeover Experience** is open to members at the Producer level and above. See page 11.
- **Coffee Chats** are open in-person to members at the Producer level and above; members at the Benefactor level and above receive a video recording. See page 10.
- **Member Backstage Tour** is open to members at the Benefactor level and above. See page 10.
- **Artist Luncheons** are open to members at the Producers' Circle level and above. See page 11; locations TBD.
- **Preface, Behind Curtain Tour, Talkback:** See page 12.

FESTIVAL CAMPUS MAP



Oregon Shakespeare Festival Map

- A** Carpenter Hall
- B** Box Office
- C** Old Light Shop
- D** New Place
- E** Gift Shop
- F** Green Show Stage
- G** Administration Offices
- H** Gertrude Bowmer Members' Lounge / Camps Building

- Accessible Entrance
- Drop-Off Point
- Accessible Parking
- Elevators
- Bus Loading & Unloading

Restrooms

- Women
- Men
- All Gender
- Accessible

ACCESSIBILITY

We are committed to offering **FREE** services that make our programs accessible to all visitors. OSF abides by all applicable ADA ticket policies, with ADA seating available at every price level.



Benjamin Jackson, Montez Greer, and Ashtin Stone, ASL interpreters for *The Merry Wives of Windsor*. Photo by Joe Sofranko.

ACCESSIBILITY SERVICES

We offer the following Access Services at all performances in our theatres, pending availability.

- Mobility assistance, elevators, and accessible bathrooms
- ADA seating, stair-free seating, armless chairs, and bariatric chairs
- Assistive Listening Devices
- Large Print Playbills
- Caption services (two weeks' notice recommended)
- Audio Description (two weeks' notice required)
- ASL Interpreting (at selected performances)

For more information about Access Services visit osfashland.org/access.

2026 MEMBER PRICES

ANGUS BOWMER & ALLEN ELIZABETHAN THEATRES

*A Midsummer Night's Dream • Come From Away •
A Raisin in the Sun • Yellow Face • The Taming of the Shrew •
Henry IV, Part One • Emma*

Seating Zone	Member Discount: 10% off		
	Previews	Tues & Sun Evenings	All Other Times
A+*	\$92	\$109	\$127
A	\$68	\$79	\$97
B	\$50	\$56	\$67
C	\$37	\$40	\$46

* A+ seating in Elizabethan and Bowmer Theatres only

THOMAS THEATRE

*You Are Cordially Invited to the End of the World! •
August Wilson's King Hedley II*

Seating Zone	Member Discount: 10% off		
	Previews	Tues & Sun Evenings	All Other Times
A	\$81	\$95	\$113
B	\$55	\$62	\$73
C	\$37	\$40	\$46

THOMAS THEATRE SOLO SHOW

*Smote This, A Comedy About God...and Other Serious \$H*T*

Seating Zone	Member Discount: 10% off		
	Previews	Tues & Sun Evenings	All Other Times
A	\$63	\$73	\$90
B	\$43	\$47	\$55
C	\$28	\$31	\$37

1935ers Level Members may purchase one \$35 ticket per show in zones B or C, all season, starting December 2, 2025.

Ticket prices listed above are per person and include a \$5-per-ticket fee that helps support our campus infrastructure and the audience experience.

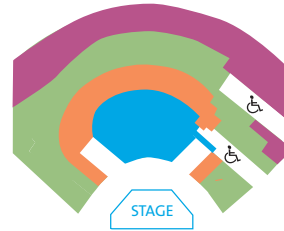
All ticket prices subject to change.

NEW IN 2026!

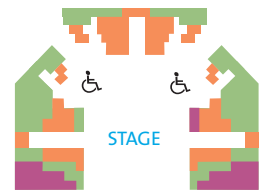
Take your 10% Member discount off any show, any seat, any date, any time you purchase—all season long. But purchase early for best seating and dates!

SEATING ZONES

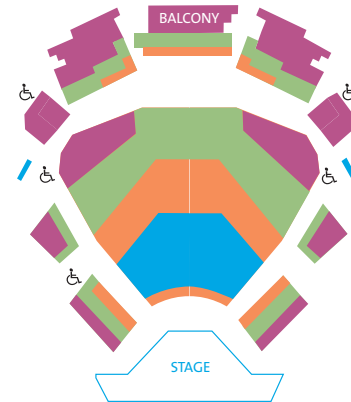
ANGUS BOWMER THEATRE



THOMAS THEATRE



ALLEN ELIZABETHAN THEATRE



Price Levels



Wheelchair seating is offered in all theatres and is subject to availability.

Seating zones subject to change.

YOUTH PRICING

Attending with a young theatregoer? Audience members age 6-17 save 20% off full prices! Click "Youth" during seat selection or contact our Box Office.

(Discount may not be combined with other offers or transferred to patrons 18 or older. Zone A+ excluded.)

OTHER EVENTS & POLICIES

EDUCATION & ENGAGEMENT EVENTS – PRICING

See descriptions (pages 9 & 12) and calendar (pages 13–20).

- **Prefaces:** \$15.00 per person
- **Post-Show Talkbacks:** FREE with a ticket to that performance
- **Campus Tours:** \$17.00 per person
- **Behind the Curtain Tours:** \$17.00 per person
- **Art to Action Series** (May 16, June 27, July 25, Aug 22, Sept 26): \$17.00 per adult per date; \$10 for 17 and under
- **Unfolding A Raisin in the Sun** (April 10–12): Class only, \$400; Class and play tickets, \$556
- **Unruly Daughters: Women Characters in the 2026 Season** (July 10–12): Class only, \$400; Class and play tickets, \$556
- **Unfolding Henry IV, Part One** (July 31–August 2): Class only, \$400; Class and play tickets, \$556

MEMBER EVENTS – PRICING & ORDERING

Member Weekends (see page 3): Choose the Member Event weekend(s) you want to attend. After November 4, 2025, go to osfashland.org/MemberEvents to see dates and times for panel discussions and luncheons/dinners on each weekend. Then after your Presale period begins, order tickets for these special activities from the Member Events page anytime.

- **ADC Dinner:** ADC members attend free*; guests are \$100 per person
- **Southampton Legacy Dinner:** \$75 per person
- **Chautauqua Guild Dinner:** \$85 per person
- **Artist Luncheons:** Members at Producers' Circle level and above attend free*; guests are \$40 per person
- Other **Member Experiences** (see pages 10 & 11): All **free** to members at or above the qualifying level*

** No-Benefits Memberships—If you elect not to receive goods with your membership for tax purposes, you may be required to purchase tickets to some events that are free with membership. Please contact the Development office for details.*

POLICIES

- **Exchanges.** Members at the Sustainer level (\$75+) and above receive free exchanges. 1935ers may exchange with a \$15 per ticket fee. 2026 tickets may be exchanged up until the day before a performance. If you have not chosen a date to exchange into, we will issue you an Exchange Voucher that may be redeemed for a performance up until October 31, 2026. Tickets may be donated up to the day of the performance.
- **Refunds.** Members at the Producer level (\$1,250+) and above receive free refunds. For 1935er, Sustainer (\$75+), Patron (\$200+), and Benefactor (\$600) members, there are no refunds unless a performance is canceled by OSF, but we do offer the option of Season Ticket Insurance (see below). No refunds or exchanges on day-of-show, promotions, benefit events, or special offers.
- **Season Ticket Insurance.** Available for members at the 1935er, Sustainer, Patron, and Benefactor level, Season Ticket Insurance (\$50 per year) offers the options of a refund or exchange without fees up until the day before the performance. Insurance is not retroactive and must be purchased when you buy your tickets. Season Ticket Insurance covers all ticket changes throughout the season. Ticket Insurance is not refundable.
- **1935ers level members** may purchase one \$35 ticket per show in zones B or C, all season, starting December 2, 2025.
- **Tickets are issued digitally only**, and will be scanned at the theatre door from your phone or printout with a no-contact scanner.
- **Children** under six are not admitted to plays or other events. To check suitability suggestions for each of the plays, call the Box Office or visit the OSF website.
- **Please be on time.** For late-arriving patrons, seating may not be possible except at intermission. Latecomers do not receive refunds. Please allow ample time to find parking in downtown Ashland.
- **Inclement weather.** In the event of inclement weather in the outdoor Allen Elizabethan Theatre, the show will continue as long as it is safe for patrons, performers, and staff. If you choose to leave during the performance, there will be no refunds, exchanges, or vouchers offered.

MEMBER BENEFITS

Thank you for your support! Your Membership enables us to produce world-class repertory theatre, arts education, and community access programs. For more information, go to osfashland.org/membership.

1935ERS • Ticket sales start December 2 • Exclusively for theatregoers ages 19-35 • 1935er exclusives: One \$35 ticket to each on stage production (10)	\$35-\$74	1935ERS	SUSTAINER	PATRON	BENEFACTOR	PRODUCER	PRODUCERS' CIRCLE	CHAUTAQUA GUILD	CHAUTAQUA GUILD CIRCLE	ARTISTIC DIRECTOR'S CIRCLE	CENTURY CIRCLE
SUSTAINER • Presale starts November 18 • 10% ticket discount on any on stage production, all season long • Rush Tickets: 50% off, subject to availability, day of performance • Access to exchange privileges • 10% discount at the Gift Shop on branded OSF merchandise	\$75-\$199										
PATRON • Presale starts November 13 All benefits of above level, PLUS: • 2 tickets to Prefaces • 2 tickets to Campus Tours • Access to members' waitlist for sold-out performances	\$200-\$599										
BENEFACTOR • Presale starts November 11 All benefits of above level, PLUS: • 2 more tickets to Prefaces (4) • Member Backstage Tour • Gift recognition on OSF website • Digital access to Premier Coffee Chat videos	\$600-\$1,249										
PRODUCER • Presale starts November 6 All benefits of above level, PLUS: • Premier Immersive Weekends • In-Person Premier Member Coffee Chats • Set Changeover Experience • 2 tickets to any on stage performance • Access to ticket refunds	\$1,250-\$2,999										
PRODUCERS' CIRCLE • Presale starts November 6 All benefits of above level, PLUS: • Exclusive Production Building Tour • Free rental for 2 pillows and 2 blankets for Allen Elizabethan Theatre • Recognition in Festival publications • Intimate lunch with company members	\$3,000-\$5,999										
CHAUTAQUA GUILD • Presale starts November 5 All benefits of above level, PLUS: • Group sponsorship of an OSF production • Concierge ticket service • Virtual show introduction for sponsored production • Spirit of Chautauqua Guild Weekend • 2 additional tickets to any production (4)	\$6,000-\$11,999										
CHAUTAQUA GUILD CIRCLE • Presale starts November 5 All benefits of above level, PLUS: • Top billing in all Chautauqua Guild listings • Private meal with company members • In-person show introduction for OSF sponsored production	\$12,000-\$24,999										
ARTISTIC DIRECTOR'S CIRCLE • Presale starts November 4 All benefits of above level, PLUS: • First opportunity to order tickets • Artistic Director's Circle Dinner • Script from sponsored production • Invitation to show introduction and select rehearsals • Closing gift from sponsored production • 4 additional tickets to any on-stage performance (8)	\$25,000-\$99,999										
CENTURY CIRCLE • Presale starts November 4 All benefits of above level. In support of securing OSF's artistic future through our Centennial Anniversary in 2035, this group of distinguished donors receive elevated recognition and engagement.	\$100,000+										

Tax Information: To comply with IRS regulations for OSF's nonprofit 501(c)(3) status, the value of Membership/donation benefits must be deducted from your receipt/acknowledgment. We estimate the following amounts to be non-tax deductible: 1935er: \$0, Sustainer \$15, Patron \$84, Benefactor \$114, Producer \$420, Producers' Circle \$444, Chautauqua Guild \$700, Chautauqua Guild Circle \$700, Artistic Director's Circle \$1,212, Century Circle \$1,212. For details, contact Development@osfashland.org.

OSF Memberships and associated benefits are designated to up to two account holders and are non-transferable. Benefits expire with Membership. Benefits and dates subject to change. There are no group benefits with Membership.

